

Lockerbie Wildlife Trust

(www.lockerbie-wildlife-trust.co.uk)

Eskrigg Reserve

May 2024 News Bulletin



Scottish Charity No:
SC 005538

1. Eskrigg Pond on 19 May.



2. Reported wildlife sightings at the Reserve during May.

a. Birds:

Blackbird, Blackcap, Blue Tit, Bullfinch, Buzzard, Canada Goose, Carrion Crow, Chaffinch, Chiffchaff, Coal Tit, Collared Dove, Crossbill, Cuckoo, Dunnock, Goldcrest, Goldfinch, Grasshopper Warbler, Great Spotted Woodpecker, Great Tit, Greenfinch, Grey Heron, Greylag Goose, Grey Wagtail, House Sparrow, Jackdaw, Jay, Lesser Redpoll, Magpie, Mallard, Mistle Thrush, Moorhen, Nuthatch, Oystercatcher, Pheasant, Pied Wagtail, Raven, Robin, Rook, Siskin, Song Thrush, Sparrowhawk, Starling, Stock Dove, Stonechat, Swallow, Treecreeper, Willow Warbler, Woodpigeon, Wren.

b. Mammals:

Fox, Hare, Rabbit, Red Squirrel, Roe Deer, Stoat.

c. Insects:

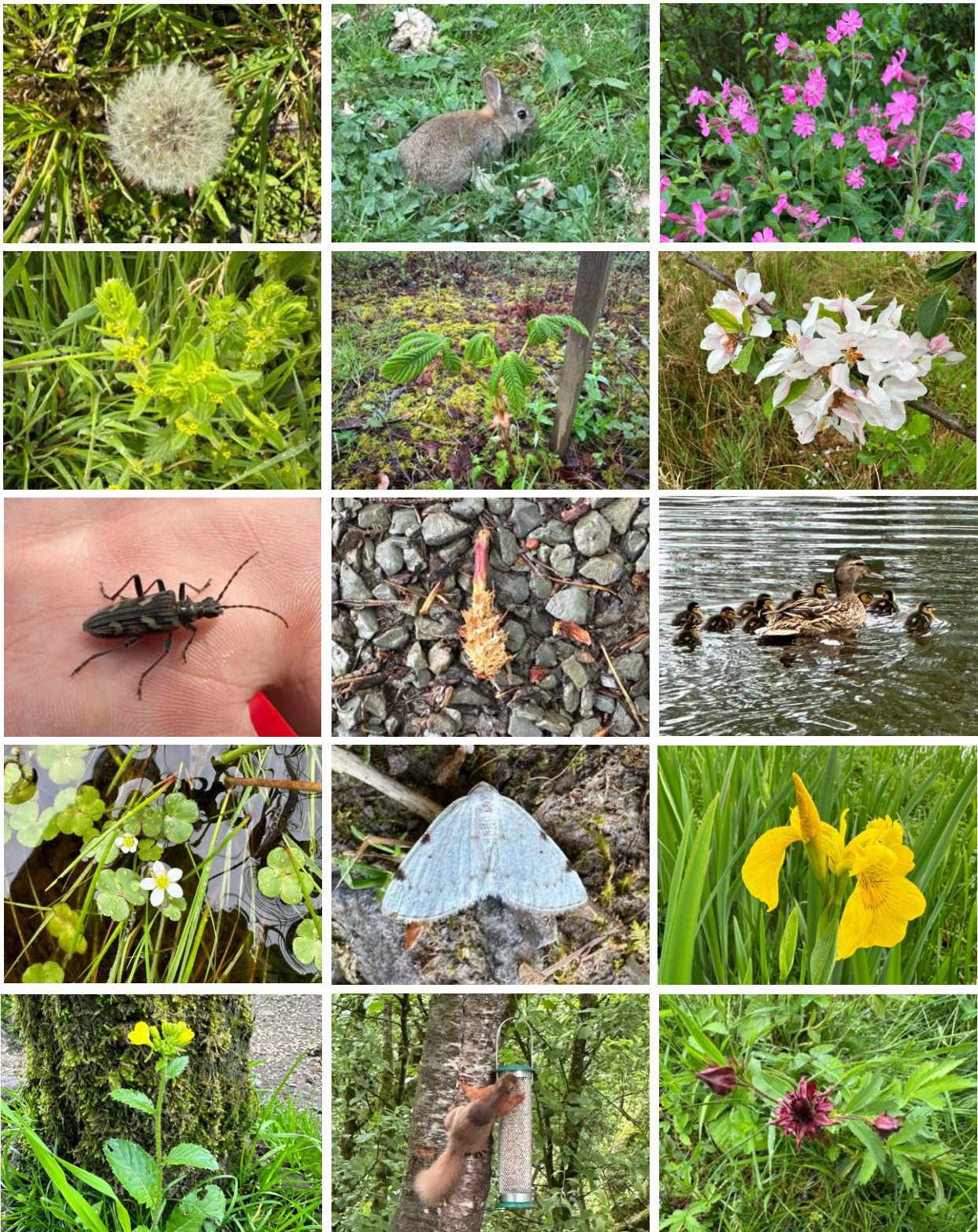
Butterflies: Large White, Orange-tip, Small White.

Dragonfly: Female Broad-bodied Chaser.



Photographs by George Trudt (GT) & Sybille Spägele (SS)

3. May 2024 Photo-gallery.



Row 1: Dandelion seed-head, young Rabbit, Red Campion

Row 2: Crosswort, young Horse Chestnut, Apple Blossom

Row 3: Two-banded Longhorn Beetle, Scots Pine cone eaten by squirrel, Mallard with 10 ducklings

Row 4: Round-leaved Water Crowfoot, **White-pinion Spotted***, Flag Iris

Row 5: **Wild Mustard***, Red Squirrel, Marsh Cinquefoil

*** New to Eskrigg**

Photographs by Jim Rae

4. Construction and Maintenance Work during May.

Thu. 02 Members of **Lockerbie and District Rotary Club** (**L to R - Sybil Williamson, Stuart Martin (front), Francis Wilbur (back), Alan Carmichael, Ivan Kennedy & Ian Sloan**) helped tidy parts of the Northern Loop.



Fri. 03 **Robert Gray** and **Gordon Reid** helped Jim tidy up the path through the Reserve, clear part of a ditch and repair a bridge that had been damaged by a person on horseback.

Tue. 07 Pupils from **Lockerbie Academy** came down to help tidy parts of the Northern Loop.

Fri. 17 **Norah Muirhead** and **Gordon Reid** pruned trees on the Northern Loop. Meanwhile, **Sam Pattinson, Robert Gray** and **Jim Rae** strimmed and raked the area at the cemetery entrance. **Jim** also treated the fence and entrance gate with Algon.



Resting Rotarians



Sam and Robert

Fri. 24 **Gordon Reid** treated the fence at the cemetery entrance with wood preservative. **Robert Gray, Norah Muirhead** and **Sybill Spägele** removed the contents of the ammunition shed and then stripped the wooden lining. Meanwhile, **Jim Rae** worked on the fittings for the new container.

During the month **Jim Rae** and **Sybill Spägele** spent many hours fitting out the new storage container.

5. May Events.

Thu. 16, Mon. 20 & Thu. 23 Pupils from **Lockerbie Academy** visited the Reserve to carry out some Biology Fieldwork.

Sun. 19 **Jim Rae** took part in the **Walk the Walk**, organised by **Lockerbie and District Rotary Club**, completed three laps of the Caste Loch (9 miles) and raised £114 for the Lockerbie Wildlife Trust.



Sat. 25 **Lockerbie Wildlife Trust Outing:** Six members of the Trust went on a trip to Yorkshire. After a brief coffee break in Ingleton to pick up a guest, the group went on to visit the **Southercales Nature Reserve** on the slopes of Ingleborough. As they walked on the limestone pavement, made of large blocks 'clints' criss-crossed by large fissures 'grikes', they tried to spot some of the interesting rare plants such as baneberry, lesser meadow-rue and green spleenwort. **Thanks to David and Kathryn Hughes** for planning the visit.



Early Purple
Orchid



Pale Lady's
Mantle



Cowslip



Hairy
Rockcress



Mother of
Thyme



Baneberry



Bulbous
Buttercup

Photographs by Jim Rae

Lockerbie Wildlife Trust Outing (continued):

The group stopped for lunch at the Ribbleshead Station (on the Settle - Carlisle line), overlooking the Ribbleshead Viaduct. then moved on to Muker where they visited the **Muker Wildflower Meadows**.



**A Cowhouse (Cow'us)
in one of the meadows**

The parish of Muker has hundreds of small field barns, or Cowhouses. They formed part of a unique style of farming which probably started in the seventeenth century, and continued on into living memory. Milk from cows provided an important income to farmers especially when it was turned into cheese and butter (Note: Swaledale Cheese is delicious). Winters in upper Swaledale are harsh, so cattle were brought in around November and tied up inside these little cowhouses. They

were fed from hay stored next to them, cut from the surrounding fields. In the spring, the cows were let out to graze on the hillside pastures and the muck from the cowhouses was spread onto the meadows to help grow the new season's hay.

The Meadows are a species-rich area. Plants to look out for include: Wood Crane's-bill, Melancholy Thistle, Yellow Rattle, Pignut, Lady's Mantles, Rough Hawkbit, Cat's-ear and Sweet Vernal Grass

Here are a few of the plants that we saw in the meadows:



Bistort



**Common
Eyebright**



Pignut



Yellow Rattle



**Creeping
Buttercup**



Red Clover



**Hart's
Tongue Fern**



**Wood
Crane's-bill**



**Rough
Hawkbit**



**Pale Lady's
Mantle**



Cuckooflower



Bush Vetch



Herb Robert



**Field Forget-
me-not**

The group returned from the Yorkshire Dales National Park via the Pennine way, observing the Swaledale Sheep as they went along.



Photograph by Jim Rae

Total people count for May = 2,096 Average number per day = 67
Highest number on 31st May = 213

Jim Rae (Eskrigg Reserve Manager)

Address: Carradale, 12 Douglas Terrace, Lockerbie, Dumfries and Galloway, DG11 2DZ.

Home Tel.: 01576 203 314 / Mobile No.: 07739 987 009

Email: jim.rae2012@gmail.com