

# Lockerbie Wildlife Trust

(www.lockerbie-wildlife-trust.co.uk)



## Eskrigg Reserve

### December 2020 News Bulletin

Scottish Charity No:  
SC 005538

1.

**View over the Reserve  
- late afternoon on the  
22nd December.**



**Swans on the ice on  
31st December.**

#### 2. **Confirmed wildlife sightings at the Reserve during December.**

##### a. **Birds**

Blackbird, Blue Tit, Bullfinch, Buzzard, Carrion Crow, Chaffinch, Coal Tit, Crossbill, Dunnock, Goldcrest, Goldfinch, Goosander, Great Spotted Woodpecker, Great Tit, Grey Wagtail, Jay, Long-tailed Tit, Mallard, Mandarin, Moorhen, Mute Swan, Nuthatch, Pheasant, Raven, Robin, Rook, Siskin, Sparrowhawk, Starling, Woodpigeon, Wren.

##### b. **Mammals**

Fox, Hare, Mole, Rabbit, Red Squirrel.

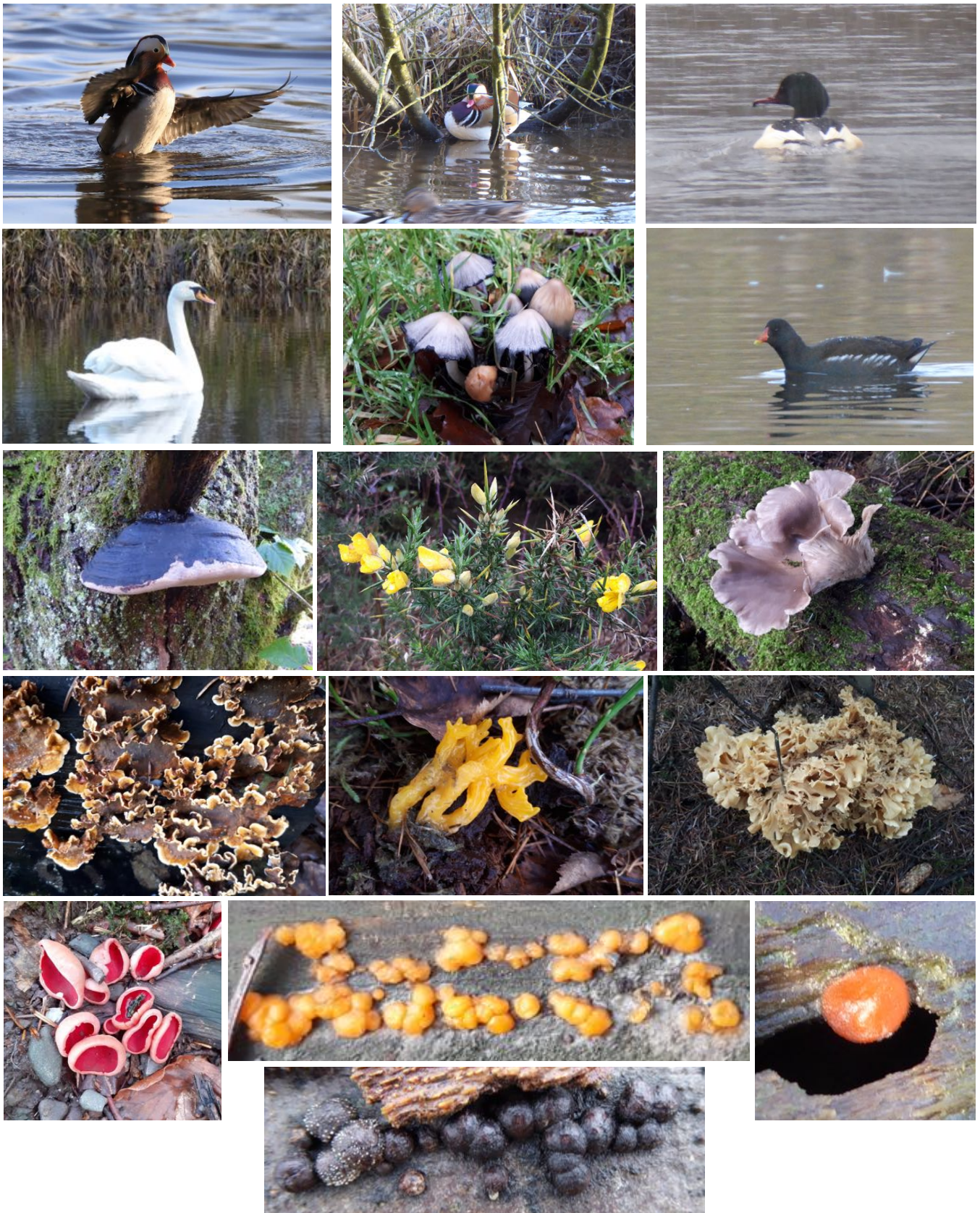
##### c. **Amphibians**

Frog.



Photographs by Jim Rae

3. Eskrigg Reserve - December 2020 Photo-gallery



1st Row: Mandarin, Mandarin (under cover), Goosander  
 2nd Row: Mute Swan, Glistening Inkcap, Moorhen  
 3rd Row: Willow Bracket, Gorse, **Pale Oyster (*Pleurotus pulmonarius*)**  
 4th Row: Hairy Curtain Crust, Yellow Stagshorn, Wood Cauliflower  
 5th Row: Scarlet Elfcup (GT), Coral Spot (conidial stage), Small Eyelash  
**Beech Woodward (*Hypoxylon fragiforme*)**

Photographs by Jim Rae and George Trudt (GT)

#### 4. December Activities at Eskrigg Reserve

Once again there were no organised activities due to the Covid restrictions.

#### 5. Irresponsible Dog Owners

##### a. Dog Dirt

On Saturday mornings, **Jim** empties the dog bins and picks up any dog dirt along the sides of the path from the car park down to the Reserve and around the Northern Loop. Usually he ends up with around 5-10 extra bags of dog dirt.



On the 11th of December, he had to pick up 27 lots of dog dirt. Most, but not all, regular dog walkers clean up after their dogs and some also help by cleaning up any other patches they come across. However, recently there has been an increase in the number of people walking their dogs in the area and the situation has got much worse.

##### b. Sheep Worrying

During the month someone allowed their dog to go into one of the Roberthill fields and some young sheep were injured. The matter was reported to the Police and signs were put up around the area asking people to keep their dogs under control and, if necessary, on a lead when near farm animals.

##### c. Injuring Wildlife in the Reserve

Just before publishing this bulletin, Jim got a telephone call to report that one of the swans in the pond area had been attacked by a dog. Feathers were bitten off, but luckily the swan appears to have suffered no permanent injury, but was very distressed.

**Visitors are asked to keep their dogs on a lead when passing through the Reserve in order to prevent just such a thing happening.**

**WOULD READERS PLEASE ENCOURAGE ALL DOG OWNERS TO ACT RESPONSIBLY.**

#### 6. Maintenance of the Reserve and Woodland Walks

During the first three weeks in December, **Jim** raked up the remaining autumn leaves from the Reserve path and Woodland Walks.

On the 10th of December, **Jim** and **Steven Dalglish** filled in the potholes on the Eskrigg Farm road.



On the 21st of December **Jim** took delivery of 20 tonnes of clean 10mm gravel donated by **The Grange**. For the remainder of the month, weather permitting, he resurfaced the path from the car park down to the Reserve. The photographs on the right were taken late on the afternoon of the 29th.



- A – Car park to granite seat
- B – Granite seat to narrow bridge
- C – Narrow bridge to corner before Reserve

Photographs by Jim Rae

**Jim Rae (Eskrigg Reserve Manager)**

**Address: Carradale, 12 Douglas Terrace, Lockerbie, Dumfries and Galloway, DG11 2DZ.**

**Home Tel.: 01576 203 314 / Mobile No.: 07739 987 009**

**Email: jim.rae2012@gmail.com**