

Lockerbie Wildlife Trust

(www.lockerbie-wildlife-trust.co.uk)



Scottish Charity No:
SC 005538

Eskrigg Reserve

June 2020 News Bulletin

1. View of the pond taken on the 28th of June - filled up with water again.



JR

2. Confirmed wildlife sightings at the Reserve during June.

a. Birds

Blackbird, Blackcap, Blue Tit, Bullfinch, Buzzard, Carrion Crow, Chaffinch, Chiffchaff, Coal Tit, Common Gull, Cuckoo, Goldcrest, Goldfinch, Goshawk, Great Spotted Woodpecker, Great Tit, Greenfinch, Grey Heron, House Martin, House Sparrow, Jackdaw, Jay, Kestrel, Lesser Redpoll, Mallard, Moorhen, Mute Swan, Nuthatch, Oystercatcher, Pheasant, Pied Wagtail, Raven, Reed Bunting, Robin, Rook, Sedge Warbler, Siskin, Song Thrush, Sparrowhawk, Starling, Swallow, Tree Sparrow, Whitethroat, Willow Warbler, Wood Pigeon, Wren.



Adult Goldcrest (GS)



Juvenile Goldcrest (GS)

b. Mammals

Brown Hare, Mole, Rabbit, Red Squirrel, Roe Deer, Stoat, Weasel.

c. Reptiles and Amphibians

Common Lizard, Frog, Toad.

d. Butterflies and Day-time Moths (M)

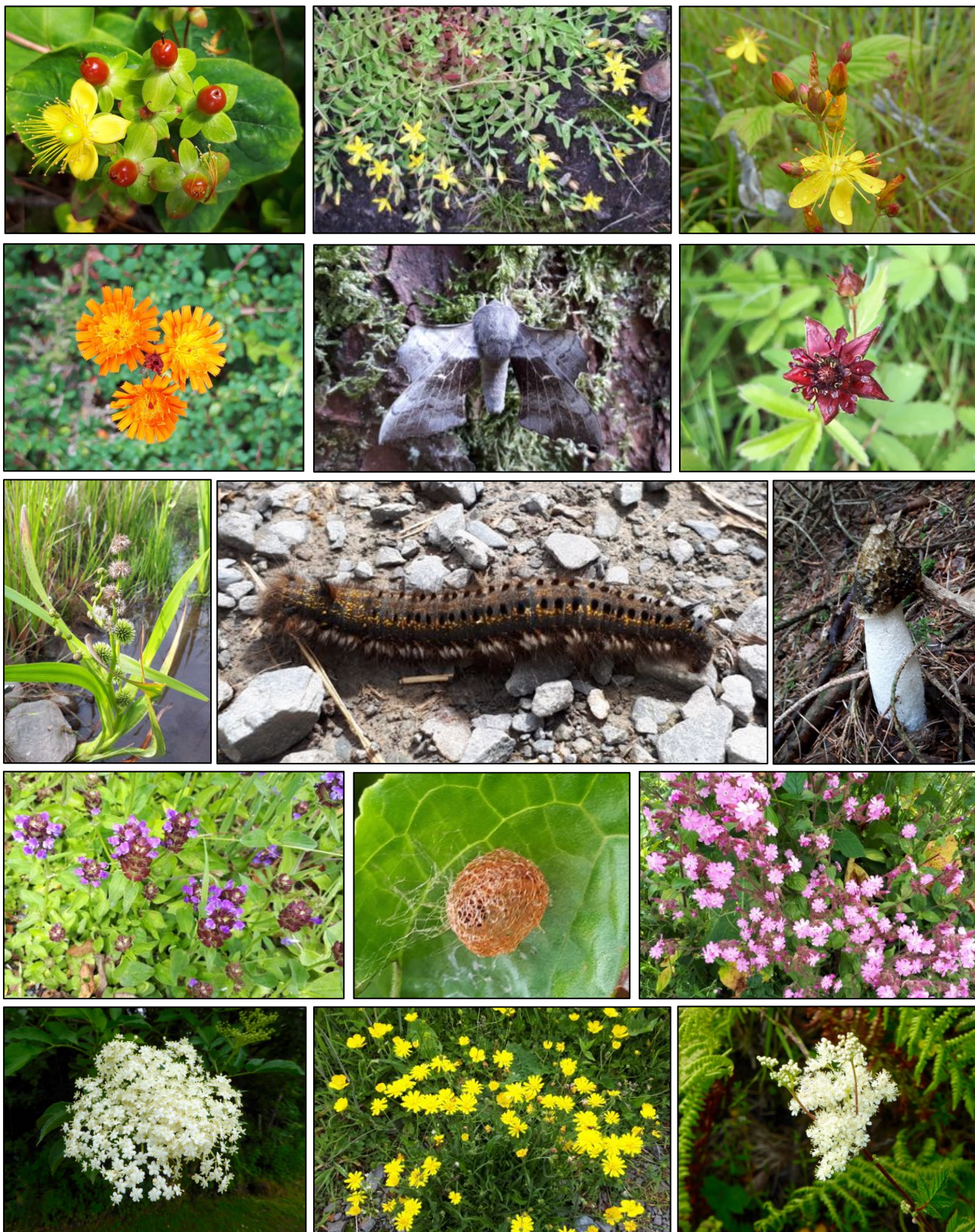
Chimney Sweeper (M), *Crambus pascuella* (M), Large White, Meadow Brown, Nettle-tap (M), Orange-tip, Peacock, Red Admiral, Ringlet, Silver Y (M), Small Copper, Small Pearl-bordered Fritillary, Small Skipper, Small White, *Udea olivalis* (M), Yellow-barred Long-horn (M).



Yellow-barred
Long-horn (JR)

Photographs by Gary Shanks (GS) and Jim Rae (JR)

3. Eskrigg Reserve - June 2020 Photo-gallery



1st Row: Tutsan, Trailing St. John's-wort, Slender St. John's-wort.

2nd Row: Fox and Cubs, Poplar Hawk-moth, Marsh Cinquefoil.

3rd Row: Branched Bur-reed, Drinker moth caterpillar, Stinkhorn.

4th Row: Selfheal, Spider egg-sac on dockleaf, Red Campion.

5th Row: Elder Flowers, Marsh Hawk's-beard, Meadowsweet

6th Row: Honeysuckle

Photographs by Jim Rae



4. June Volunteer Activities at Eskrigg Reserve

Jim was still lone-working during the month of June. In addition to the normal daily and weekly routines he:

- met with the joiner, Scott McLean, to discuss the construction of the stand and approach to the new hide,
- trimmed the grass at the Cemetery entrance,
- trimmed, raked and weeded the sides of the Reserve path from the forest road to the shelter,
- trimmed and raked the path from the car park down to the Reserve,
- conducted the June plant survey,
- cut, tied and fitted two 3/4 depth gabion baskets which will be filled to provide a level path at the rear of the new hide,
- filled the 3/4 gabion baskets with stones - nearly full by end of day on the 30th.



- carried out the June Moth-trapping exercise,
- spring-cleaned the Eskrigg Centre in preparation for its re-opening.

5. New Records for Eskrigg

Macro-moths:

Eulithis mellinata - Spinach - no photograph

Micro-moths:

Aethes cnicana - no photograph

Argyresthia conjugella - Apple Fruit Moth

Crambus pascuella - a grass moth

New Plants: (see June Photo-gallery P2)

Crepis paludosa - Marsh Hawk's-beard

Hypericum pulchrum - Slender St. John's-wort

Hypericum humifusum - Trailing St. John's-wort



Micro-moth: *Argyresthia conjugella* (Apple Fruit Moth)



Micro-moth: *Crambus pascuella*

6. Note regarding the breeding wildfowl at Eskrigg.

The swans produced three eggs that turned out to be infertile. One brood of seven and one of eight ducklings are doing well. Of the first batch of three moorhen chicks only one survived, but the second batch of two are still doing well.



7. The Red Squirrel situation

There has only been one Red Squirrel seen in the Reserve since Christmas. Despite the lockdown and travel restrictions, Victoria McNamara has continued to travel from Dumfries to Lockerbie, by car, several times each week in order to feed the squirrels and other wildlife in the wood nearby. Until she stops, the situation is unlikely to improve.

Photographs by Jim Rae

Moth Trapping at Eskrigg Reserve 24-25 June 2020

Scientific Name	Common Name	Pond Fringe	Spruce Wood	Pine Wood
		NY1256380378	NY1252980391	NY1248980386
Macro-moths		Number	Number	Number
<i>Perizoma taeniata</i>	Barred Carpet	1		
<i>Eulithis pyraliata</i>	Barred Straw	11	2	1
<i>Hypena crassalis</i>	Beautiful Snout			1
<i>Spilosoma luteum</i>	Buff Ermine			1
<i>Phalera bucephala</i>	Buff-tip	1		
<i>Hadena rivularis</i>	Campion	1		
<i>Lomaspilis marginata</i>	Clouded Border	1		
<i>Abraxas sylvata</i>	Clouded Magpie			1
<i>Lomographa temerata</i>	Clouded Silver			1
<i>Orthosia cerasi</i>	Common Quaker			1
<i>Mythimna pallens</i>	Common Wainscot	2		
<i>Cabera exanthemata</i>	Common Wave	6		
<i>Axylia putris</i>	Flame	2		
<i>Cybosia mesomella</i>	Four-dotted Footman	3		
<i>Colostygia pectinataria</i>	Green Carpet	4	1	3
<i>Agrotis exclamationis</i>	Heart and Dart	4		
<i>Diarsia mendica</i>	Ingrailed Clay		1	2
<i>Noctua pronuba</i>	Large Yellow Underwing		3	4
<i>Scopula immutata</i>	Lesser Cream Wave	1		
<i>Pheosia gnoma</i>	Lesser Swallow Prominent	1		
<i>Noctua comes</i>	Lesser Yellow Underwing		1	
<i>Campaea margaritata</i>	Light Emerald	5		
<i>Hepialus fusconebulosa</i>	Map-winged Swift	1	2	10
<i>Oligia fasciuncula</i>	Middle-barred Minor	3		
<i>Alcis repandata</i>	Mottled Beauty	9	1	
<i>Eulithis populata</i>	Northern Spinach	1	3	1
<i>Biston betularia</i>	Peppered Moth	1		
<i>Laotloe populi</i>	Poplar Hawk-moth	2		
<i>Diarsia brunnea</i>	Purple Clay		1	
<i>Idaea aversata</i>	Riband Wave	2	1	
<i>Xanthorhoe montanata</i>	Silver-ground Carpet	1		1
<i>Autographa gamma</i>	Silver Y	1		
<i>Idaea dimidiata</i>	Single-dotted Wave	1		
<i>Euplexia lucipara</i>	Small Angle Shades	2	1	
<i>Photedes minima</i>	Small Dotted Buff	1		
<i>Ectropis crepuscularia</i>	Small Engrailed			1
<i>Diarsia rubi</i>	Small Square-spot			1
<i>Perizoma alchemillata</i>	Small Rivulet		1	1
<i>Mythimna impura</i>	Smoky Wainscot	13		
<i>Abrostola tripartita</i>	Spectacle	1		
<i>Eulithis mellinata</i>	Spinach	1		
<i>Paradarisa consonaria</i>	Square Spot	5	1	
<i>Rivula sericealis</i>	Straw Dot			
<i>Spilosoma lubricipeda</i>	White Ermine	6		2
Micro-moths				
<i>Aethes cnicana</i>	no common name	2		
<i>Ancylis achatana</i>	no common name	9	1	1
<i>Argyresthia conjugella</i>	Apple Fruit Moth	1		
<i>Crambus pascuella</i>	no common name	2		
<i>Elophila nymphaeata</i>	Brown China Mark	1		
<i>Eudonia lineola</i>	no common name	1		
<i>Evergestis pallidata</i>	no common name	1		
<i>Gypsonoma dealbana</i>	no common name	1		
<i>Pandemis cerasana</i>	Barred Fruit-tree Tortrix	1		1
<i>Scoparia basistrigalis</i>	no common name	4		1
<i>Udea olivalis</i>	no common name		2	1
			Total 175	

Jim Rae (Eskrigg Reserve Manager)

Address: Carradale, 12 Douglas Terrace, Lockerbie, Dumfries and Galloway, DG11 2DZ.

Home Tel.: 01576 203 314 / Mobile No.: 07739 987 009

Email: jim.rae2012@gmail.com