

Lockerbie Wildlife Trust

(www.lockerbie-wildlife-trust.co.uk)

Eskrigg Reserve

July 2019 News Bulletin



Scottish Charity No:
SC 005538

1. Eskrigg Pond on the 27th of July.



2. Confirmed wildlife sightings at the Reserve during April.

a. Birds

Blackbird, Blue Tit, Bullfinch, Buzzard, Carrion Crow, Chaffinch, Chiffchaff, Coal Tit, Collared Dove, Common Gull, Crossbill, Dunnock, Goldcrest, Goldfinch, Goshawk, Great Spotted Woodpecker, Great Tit, Greenfinch, Grey Heron, Grey Wagtail, House Sparrow, House Martin, Jackdaw, Jay, Kingfisher, Lesser Black-backed Gull, Lesser Redpoll, Little Grebe, Long-tailed Tit, Mallard, Moorhen, Mute Swan, Nuthatch, Pheasant, Pied Wagtail, Raven, Reed Bunting, Robin, Rook, Siskin, Song Thrush, Starling, Stock Dove, Swallow, Treecreeper, Tree Sparrow, Wood Pigeon, Wren.



Young Jay

b. Mammals

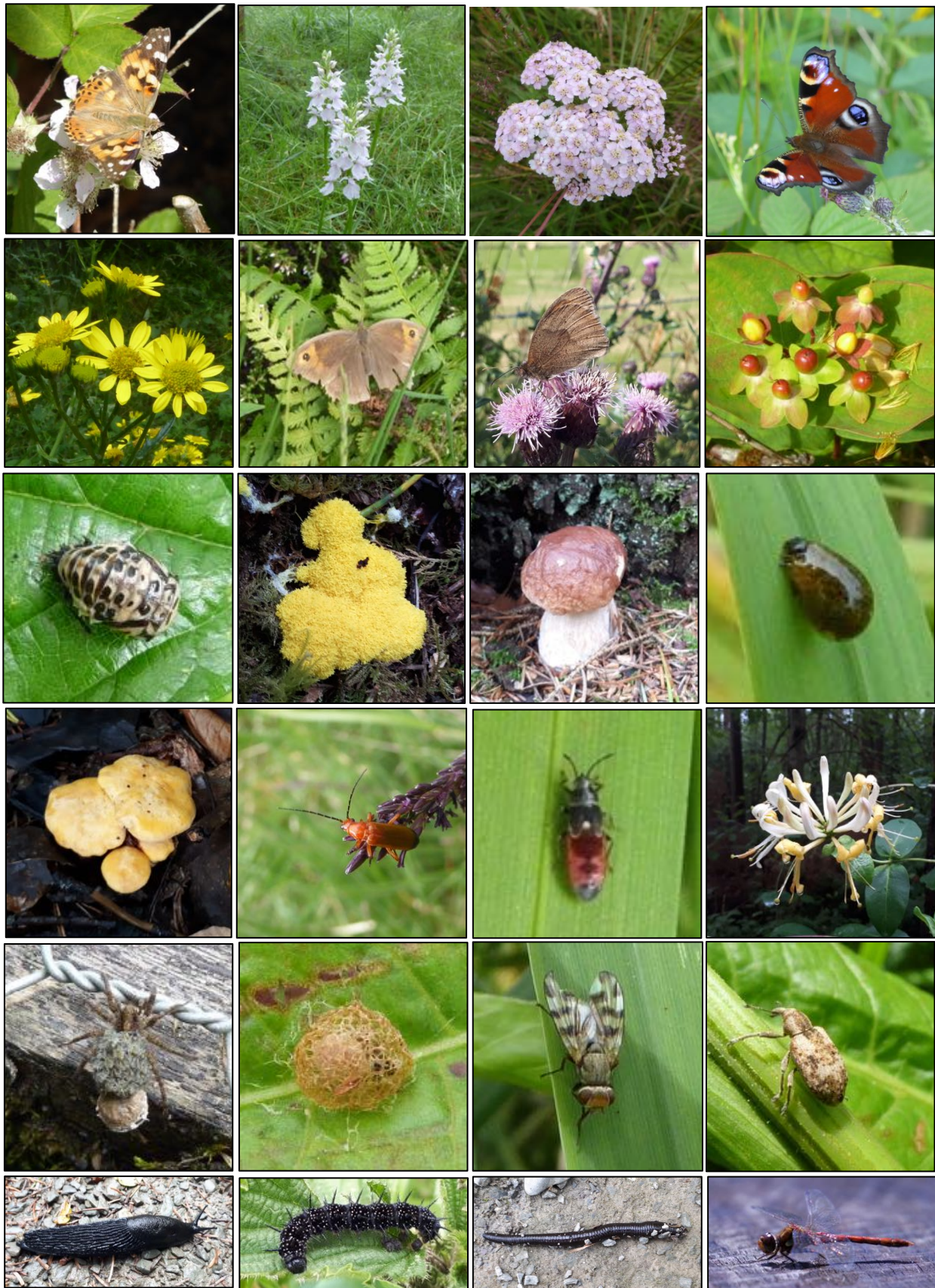
Bank Vole, Fox, Mole, Rabbit, Red Squirrel, Roe Deer, Woodmouse.

c. Reptiles and Amphibians

Common Lizard, Frog, Toad.

Photographs by Jim Rae

3. Eskrigg Reserve July Photo-gallery



1st Row: Painted Lady Butterfly (JR), Spotted Marsh Orchid (JR), Yarrow (JR), Peacock Butterfly (JR).

2nd Row: Marsh Ragwort (JR), Meadow Brown Butterfly (JR), Meadow Brown Butterfly (JR), Tutsan (JR).

3rd Row: Eyed Ladybird pupa (RT), Yellow Slime Mould (JR), Penny Bun (JR), Cereal Leaf Beetle larva (RT).

4th Row: Chanterelle (JR), Soldier Beetle (JR), European Chinchbug nymph (RT), Honeysuckle (JR).

5th Row: Wolf Spider with egg sac and live brood (RT), Weevil cocoon (RT), Picture-winged Fly (JR), Weevil (RT).

6th Row: Black Slug (JR), Peacock Butterfly caterpillar (JR), Leech (JR), Common Darter (SS).

Photographs by Jim Rae (JR), Ruth Tobias (RT), Sybille Spägele (SS).

4. Volunteer Activities in July



Tue. 2nd Steven, Fraser and Erin Dalgliesh helped Jim with the new path to replace the boardwalk.

Sat. 6th Bert Kirkpatrick helped Jim cut the grass at the Cemetery Lodge entrance.

Sun. 7th Bert cut back the roots of a tree along the boardwalk while Jim strimmed the sides of the path through the reserve. Both then raked up the grass cuttings.



Thu. 11th Josh Johnston and Jack Pritchard helped Jim move the gravel.

Over the weekend 13th/14th Bert and Jim treated the Eskrigg Centre and Compost Toilet with their annual coat of wood preservative.



During the rest of the month, Bert strimmed more of the forest roadsides and treated other timber structures within the Reserve with wood preservative when he was available. Meanwhile, Jim spent most days moving gabion stones and 40mm gravel to the new path and started strimming the path from the car park to the Reserve.



Thu. 18th Josh Johnstone helped Jim with the new path.



Tue. 23rd Steven Dalgliesh dismantled another section of the boardwalk while Erin and Fraser Dalgliesh helped Jim collect and lay more gabion stones and 40mm gravel on the new path.

Tue. 30th Josh Johnstone helped Jim collect gabion stones and 40mm gravel for the new path.



By the end of the month Jim had reached the out-flow from the pond with the new path and will start to build a bridge over the out-flow pipe when he has amassed the necessary timbers.



Photographs by Jim Rae

5. **July Events at the Reserve**

There was so much maintenance and development work to be done during the month that no special events were organised.

6. **Invitation to the Garden Party at Holyrood 3rd July 2019.**

Jim received an invitation to the event when he was awarded the BEM at the New Year.



Her Majesty Queen Elizabeth II

HRH Princess Anne

HRH Prince Andrew

The Garden Party took place on a lovely summer's day. Crowds waited to catch a glimpse of the Queen as she came down the steps from the Palace of Holyroodhouse into the palace garden. The other members of the Royal Family present were Princess Anne and Prince Andrew.

On duty, as the Sovereign's Bodyguard in Scotland, was the Royal Company of Archers. This ceremonial unit has performed the role of Royal Bodyguard since 1822 when King George IV visited Scotland.

7. **Cereal Leaf Beetle (*Oulema melanopus*)**

This beetle has one generation per year. They overwinter in crop stubble or tree bark crevices. When the temperature rises in the spring, the adults mate and lay eggs on the underside of leaves. The eggs are bright yellow at first and darken



over time. The larvae hatch in 7–15 days. Larvae are the greatest threat to vegetation, as they eat the superficial layer of leaves hindering their photosynthetic potential. Larvae consume nearly all cereal crops, but at the Reserve they feed on the reed canary grass. These larvae mature in 12–20 days. The larva has a defense mechanism in which it smears excrement on its body to mask its vibrant colour and to deter predators. Pupation occurs in the soil, with the adults emerging in 20–25 days.



Photographs by Jim Rae

Jim Rae (Eskrigg Reserve Manager)

Address: Carradale, 12 Douglas Terrace, Lockerbie, Dumfries and Galloway, DG11 2DZ.

Home Tel.: 01576 203 314 / Mobile No.: 07739 987 009

Email: jim.rae2012@gmail.com