

Lockerbie Wildlife Trust

(www.lockerbie-wildlife-trust.co.uk)

Eskrigg Reserve

June 2019 News Bulletin



Scottish Charity No:
SC 005538

1. Eskrigg Pond on the 25th of June.



2. Confirmed wildlife sightings at the Reserve during April.

a. Birds

Blackbird, Blackcap, Black-headed Gull, Blue Tit, Bullfinch, Buzzard, Carrion Crow, Chaffinch, Chiffchaff, Coal Tit, Collared Dove, Common Gull, Crossbill, Dunnock, Goldcrest, Goldfinch, Great Spotted Woodpecker, Great Tit, Greenfinch, Grey Heron, House Sparrow, House Martin, Jackdaw, Jay, Lesser Black-backed Gull, Lesser Redpoll, Magpie, Mallard, Moorhen, Mute Swan, Nuthatch, Oystercatcher, Pheasant, Pied Wagtail, Raven, Reed Bunting, Robin, Rook, Sand Martin, Siskin, Song Thrush, Sparrowhawk, Starling, Swallow, Treecreeper, Willow Warbler, Wood Pigeon, Wren.

b. Mammals

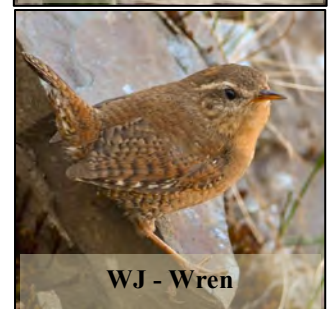
Bank Vole, Common Shrew, Mole, Pipistrelle Bat, Rabbit, Red Squirrel, Roe Deer, Woodmouse.

c. Reptiles and Amphibians

Common Lizard, Frog, Toad.



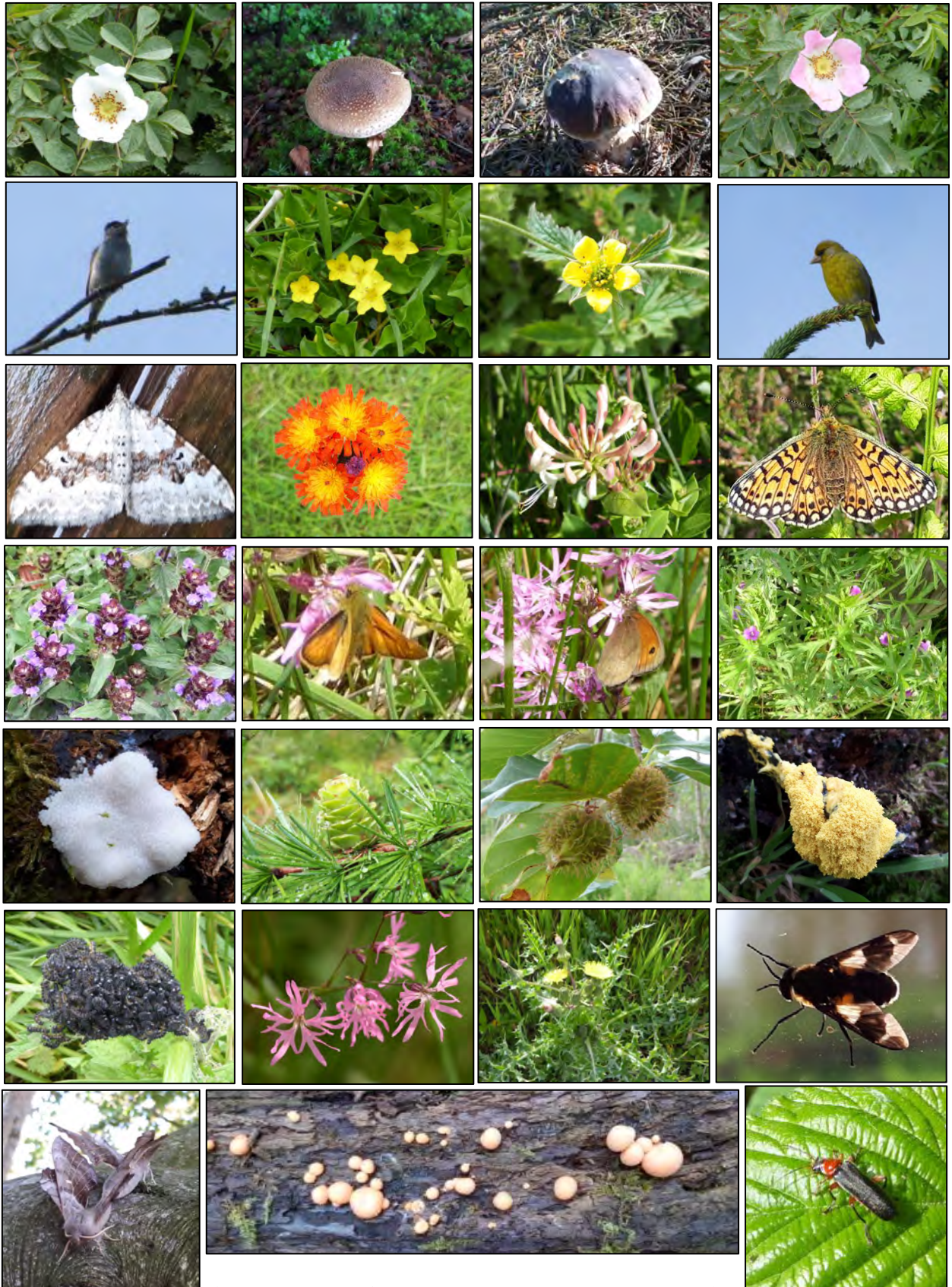
IR - Lesser Redpoll



WJ - Wren

Photographs by William Jardine (WJ), Jim Rae (JR), Ian Roberts (IR).

3. Eskrigg Reserve June Photo-gallery



1st Row: *Rosa stylosa*, The Blusher, Penny Bun, *Rosa canina*.

2nd Row: Blackcap, Yellow Pimpernel, Wood Aven, Greenfinch.

3rd Row: Silver-ground Carpet, Fox-and-Cubs, Honeysuckle, Small Pearl-bordered Fritillary.

4th Row: Selfheal, Large Skipper, Meadow Brown, Cut-leaved Cranes-bill.

5th Row: White Slime Mould, Developing Larch Cone, Developing Beech Mast, Yellow Slime Mould.

6th Row: Mass of Caterpillars on Nettle, Ragged Robin, Prickly Sow-thistle, *Chrysops relictus*.

7th Row: Mating Poplar Hawkmoths, Orange Slime Mould, Soldier Beetle.

Photographs by Jim Rae

4. Volunteer Activities in June

Tue. 11th - Sat 15th Cairn Douglas came for some work experience at Eskrigg Reserve.

During the week Cairn helped Jim carry out a range of tasks including:

- working Steven Dalglish and Findlay Crossan on the 11th and Anthony Ison on the 15th to shift gabion stones and 40mm gravel using the quad bike and trailer and wheelbarrow to the new path which is replacing the boardwalk.



- clearing a tree stump and roots, using an axe, to make way for the new path.
- filling in the pot-holes on the Eskrigg Farm road and forest road.
- raking up willow catkins from the path through the Reserve.
- pruning bushes along the forest road.
- assisting with moth trapping and identification.
- visiting Scott Country in Castle Douglas to learn how to set up a trail camera and link-micro-cam.
- doing some wildlife photography.

5. June Events at the Reserve

Sat. 1st The Brownies visited the Reserve. After a short guided tour they had a go at identifying the woodland mini-beasts.



Mon. 4th The Beavers organised their own private visit to Eskrigg Reserve. One of the activities they did was to create some woodland art. Unfortunately, the group leaders did not teach the Beavers about the Country Code and how to leave the countryside as you find it - it took over an hour to clear away an untidy mass of stones, leaves and twigs from the paths and picnic tables after they left.



Wed. 19th Gretna Primary 2 pupils and staff visited the reserve. After a picnic lunch, they studied the Woodland Mini-beasts caught in 24 pitfall traps.



Thu. 20th Gretna Sparklers Nursery visited the Reserve. They followed the Gruffalo Trail and, after a snack, went on a scavenger hunt. After lunch they hunted for beasties in the heathland area before having a go at den building.

5. June Events at the Reserve (continued)

Moth Trapping 1 - 11/12.06.19 Jim Rae, Val & Peter Russell

Common Name	Scientific Name	Spruce wood	Pine Wood	Pond Fringe
		NY 125 804	NY 124 804	NY 126 804
		Heath Trap	Heath Trap	Robinson Trap
		6W	!5W	125W
		Actinia	Actinia	Hg Vap
Beautiful Golden Y - g	<i>Autographa pulchrina</i>	-	-	1
Bordered White	<i>Bupalus piniaria</i>	2	3	1
Campion - f	<i>Hadena rivularis</i>	-	-	2
Clouded-bordered Brindle	<i>Apamea crenata</i>	-	-	1
Common Marbled Carpet	<i>Chloroclysta truncata</i>	-	1	3
Common Pug	<i>Eupithecia vulgata</i>	-	-	1
Flame Shoulder	<i>Ochropleura plecta</i>	-	-	1
Ghost Moth (f) - b	<i>Hepialus humuli</i>	-	-	1
Green Carpet	<i>Colostygia pectinataria</i>	2	-	1
Lychnis - e	<i>Hadena bicruris</i>	-	-	1
Map-winged Swift - j	<i>Hepialus lupulinus</i>	-	-	1
Mottled Pug - h	<i>Eupithecia exigua</i> exig.	-	-	1
Pale Prominent	<i>Pterostoma palpina</i>	-	-	1
Pale-shouldered Brocade - d	<i>Lacanobia thalassina</i>	-	1	-
Plain Wave - i	<i>Idaea straminata</i>	-	1	-
Small Phoenix	<i>Ecliptopera silaceata</i>	-	1	1
Small Rivulet - a	<i>Perizoma alchememillata</i>	-	-	1
Tawny-barred Angle - c	<i>Macaria liturata</i>	1	1	-
White Ermine	<i>Spilosoma lubricipeda</i>	-	1	1
a micro-moth	<i>Eudonia delunella</i>	-	-	1
a micro-moth	<i>Crambus pratella</i>	-	-	1
a micro-moth	<i>Scoparia basistrigalis</i>	1	-	2



Photographs by Jim Rae

Moth Trapping 2 - 27/28.06.19 Jim Rae

Species new to Eskrigg

Macro-moths (153)

Common Name

Scientific Name

Pond Fringe
NY 126 804
Robinson Trap
125W Hg Vap

Pine Wood
NY 124 804
Heath Trap
15W Actinia

Barred Red	<i>Hylaea fasciaria</i>	-	4
Barred Straw	<i>Eulithis pyraliata</i>	5	-
Beautiful Golden Y	<i>Autographa pulchrina</i>	1	-
Beautiful Snout	<i>Hypena crassalis</i>	5	3
Bright-line Brown-eye	<i>Lacanobia oleracea</i>	1	-
Brimstone	<i>Opisthograptis luteolata</i>	-	1
Buff Ermine	<i>Spilosoma luteum</i>	1	1
Campion	<i>Hadena rivularis</i>	3	-
Cinnabar	<i>Tyria jacobaeae</i>	2	-
Clay - a	<i>Mythimna ferrago</i>	1	-
Clouded Border	<i>Lomaspilis marginata</i>	6	-
Common Rustic	<i>Mesapamea secalis</i>	4	-
Common Wave	<i>Cabera exanthemata</i>	1	-
Cream Wave	<i>Scopula floslactata</i>	1	-
Dark Arches	<i>Apamea monoglypha</i>	1	-
Dark Brocade	<i>Mniotype adusta</i>	1	-
Double Square-spot	<i>Xestia triangulum</i>	1	-
Dusky Brocade	<i>Apamea remissa</i>	1	-
Flame, The - b	<i>Axylia putris</i>	1	-
Flame Shoulder	<i>Ochropleura plecta</i>	1	-
Ghost Moth	<i>Hepialus humuli humuli</i>	-	1
Gold Swift	<i>Hepialus lupulinus</i>	1	-
Green Arches	<i>Anaplectoides prasina</i>	1	-
Green Carpet	<i>Colostygia pectinataria</i>	8	6
Grey Arches - c	<i>Polia nebulosa</i>	1	-
Ingrailed Clay	<i>Diarsia mendica mendica</i>	2	3
Light Emerald	<i>Campaea margaritata</i>	6	-
Lychnis	<i>Hadena bicruris</i>	1	-
Map-winged Swift	<i>Hepialus fusconebulosa</i>	1	2
Marbled Minor	<i>Oligia strigilis</i>	2	-
Mottled Beauty	<i>Alcis repandata repandata</i>	15	10
Peach Blossom - d	<i>Thyatira batis</i>	1	-
Poplar Hawkmoth	<i>Laothoe populi</i>	3	-
Purple Bar - e	<i>Cosmorhoe ocellata</i>	4	-
Purple Clay	<i>Diarsia brunnea</i>	5	2
Red-necked Footman	<i>Atolmis rubicollis</i>	1	-
Riband Wave	<i>Idaea aversata</i>	4	2
Silver Ground Carpet	<i>Xanthorhoe montanata montanata</i>	2	1
Silver Y	<i>Autographa gamma</i>	1	-
Single-dotted Wave - f	<i>Idaea dimidiata</i>	1	-
Small Angle Shades	<i>Euplexia lucipara</i>	1	-
Small Clouded Brindle	<i>Apamea unanims</i>	1	-
Small Dotted Buff	<i>Photedes minima</i>	2	-
Small Yellow Wave - g	<i>Hydrelia fammeolaria</i>	1	-
Smoky Wainscott	<i>Mythimna impura</i>	3	-
Snout	<i>Hypena proboscidalis</i>	4	-
Straw Dot	<i>Rivula sericealis</i>	1	-
Tawny-barred Angle	<i>Macaria liturata + f. nigrofulvata</i>	3	-
White-banded Carpet	<i>Spargania luctuata</i>	1	-
White Ermine	<i>Spilosoma lubricipeda</i>	1	1
Willow Beauty	<i>Peribatodes rhomboidaria</i>	-	1

Micro-moths (50)

a micro-moth

Aethes cnicana

a micro-moth

Eudonia lineola

a micro-moth

Crambus uliginosellus

a micro-moth

Eudonia delunella

Brown Chinamark

Elophila nymphaeata

a micro-moth

Notocelia cynosbatella

a micro-moth

Eudonia mercurella

a micro-moth

Scoparia ambigualis

a micro-moth

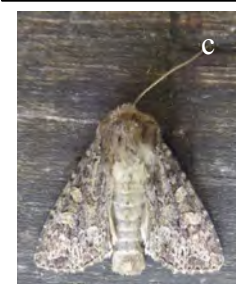
Eudonia truncicolella

a micro-moth

Scoparia basistrigalis

a micro-moth

Eudonia lacustrata



Photographs by Jim Rae

5. June Events (continued)

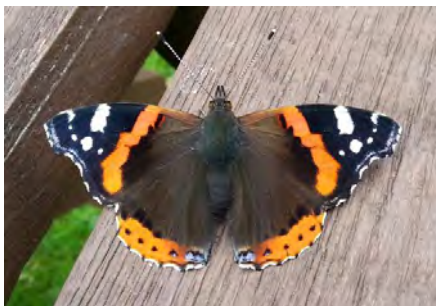
Tue. 26th In the morning, there was a visit by some members of the **Annan Probus Club**. Jim Rae gave the group a guided tour of the Reserve as a follow-up to a talk he gave them in May.

Tue. 26th In the afternoon, the **Advanced Higher Biology Class** from **Lockerbie Academy**, accompanied by their teacher Ms Bowker, visited the Reserve to collect data in order to prepare ethograms.

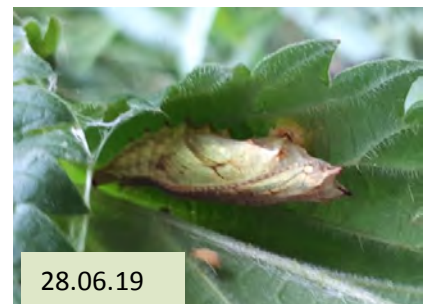
Sat. 29th A Student Team from the Community College of the City University, Hong Kong visited the Reserve, accompanied by Russell Chan.



6. Following the development of the Red Admiral Butterfly



No eggs spotted.
First sign - almost
fully growth
caterpillar found.



Jim Rae (Eskrigg Reserve Manager)
Address: Carradale, 12 Douglas Terrace, Lockerbie, Dumfries and Galloway, DG11 2DZ.
Home Tel.: 01576 203 314 / Mobile No.: 07739 987 009
Email: jim.rae2012@gmail.com