

Lockerbie Wildlife Trust

(www.lockerbie-wildlife-trust.co.uk)



Eskrigg Reserve

February 2019 News Bulletin

Scottish Charity No:
SC 005538

1. Eskrigg pond at sunrise (07:51) on Monday 25th of February.



2. Confirmed wildlife sightings at the Reserve during February.

a. Birds

Blackbird, Black-headed Gull, Blue Tit, Brambling, Bullfinch, Buzzard, Carrion Crow, Chaffinch, Coal Tit, Collared Dove, Dunnock, Fieldfare, Goldcrest, Goldfinch, Great Spotted Woodpecker, Great Tit, Greenfinch, Grey Heron, Grey Wagtail, House Sparrow, Jackdaw, Jay, Kestrel, Lesser Redpoll, Long-tailed Tit, Mallard, Merlin, Moorhen, Mute Swan, Nuthatch, Pheasant, Raven, Robin, Rook, Siskin, Song Thrush, Sparrowhawk, Starling, Stock Dove, Treecreeper, Wood Pigeon, Wren.

Three Red Kites were reported on the 27th of February, but these were not confirmed.

b. Mammals

Bank Vole, Common Shrew, Fox, Mole, Rabbit, Red Squirrel, Roe Deer, Woodmouse.

c. Amphibians

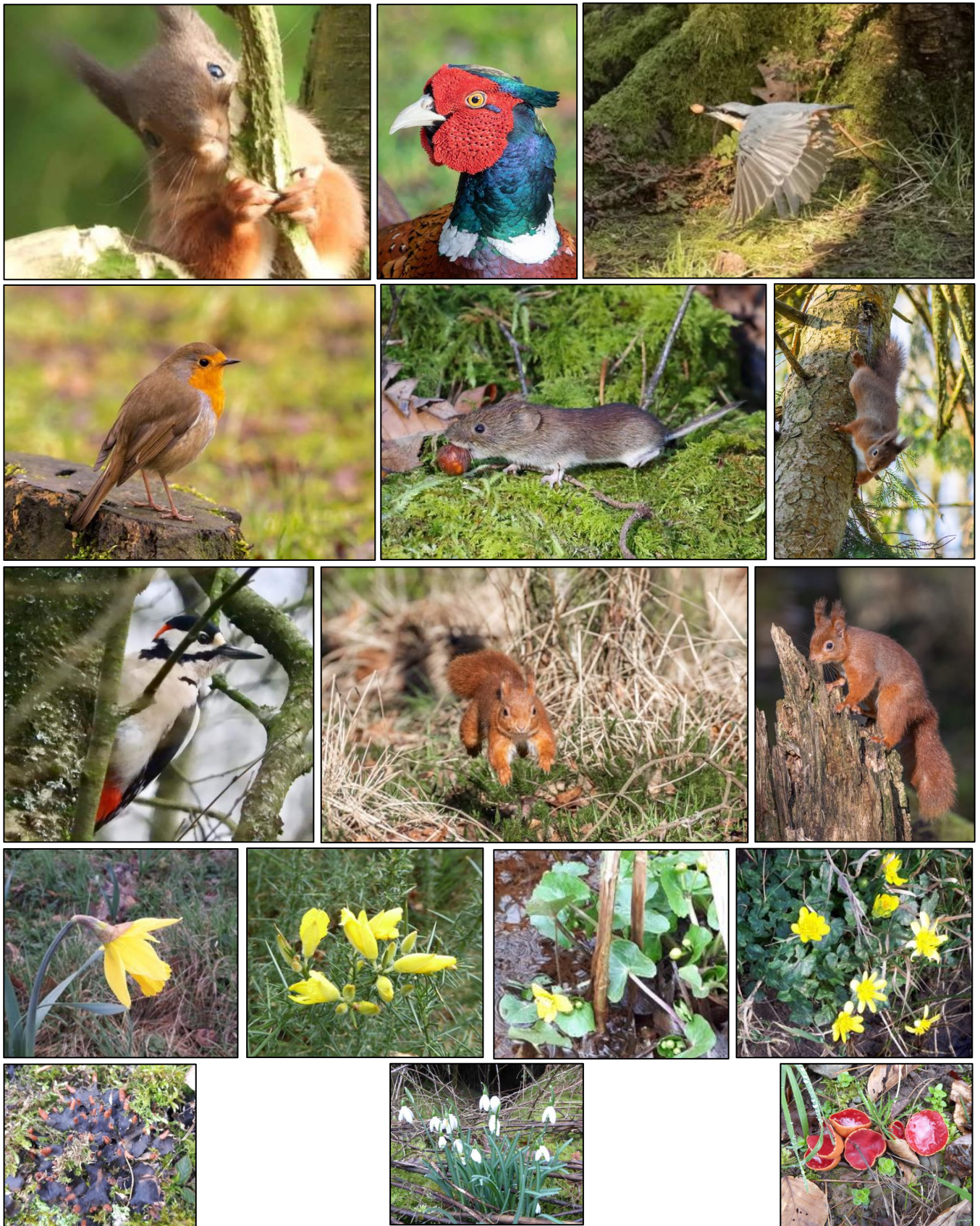
Toads

Three small, male toads competing with each other to fertilise the eggs of one large, gravid female.



Photographs by Jim Rae

3. Eskrigg Reserve February Photo-gallery



1st Row: Red Squirrel (GS), Cock Pheasant (TS), Nuthatch (DB)

2nd Row: Robin (CL), Bank Vole (BT), Red Squirrel (SI)

3rd Row: Great Spotted Woodpecker (GS), Red Squirrel (FK), Red Squirrel (FK)

4th Row: Daffodil (JR), Gorse (JR), Marsh Marigold (JR), Lesser Celandine (JR)

5th Row: Dog Lichen (JR), Snowdrops (JR), Scarlet Elfcup (JR)

Photographs by David Brantom (DB), Sheila Ivison (SI), Fiona Kilgour (FK), Caroline Legg (CL),
Jim Rae (JR), Tony Scruton (TS), Gary Shanks (GS), Brian Taylor (BT),

4. Volunteer Activities in February

Tue. 5th Steven Jackson and Jim Rae raked and cleared part of the Larch Walk.

Wed. 6th Jim Rae raked some woodland paths.

Tue. 12th Steven Jackson, Steven Dalglish and Jim Rae raked and cleared more of the Larch Walk.

Sat. 16th Liam Gibson, Lewis Carrick and Anthony Ison helped Jim Rae to rake up twigs and leaves from the Reserve Path.



Tue. 19th Steven Dalglish, Steven Jackson and Jim Rae raked and cleared more of the Larch Walk and Pipeline Walk.



Sat. 23rd Neil Stewart and Anthony Ison helped Jim Rae lay a bridge, a section of boardwalk and a short gravel path near the finishing line for the Nut Race to facilitate access during the race the following day.



Tue. 26th Steven Jackson, Steven Dalglish and Jim Rae laid a new layer of 10mm gravel on the Larch Walk and the start of the Pipeline Walk.

5. February Events at the Reserve

Sun. 3rd The day started with a beautiful sunrise (a). The temperature over the previous few days had been well below zero and there was only a small area of open water that the swans and ducks had managed to keep from freezing over (b). The thaw was due to start that day so some local lads asked if they could take the opportunity to get in some skating practice. They promised to keep well clear of the wildfowl - and they did. Good fun was had by all.



L to R: Charlie Caldwell, Joshua Halliday, Jack Parry, Jay Caldwell and Rory Hunter.

Photographs by Jim Rae

Sun. 24th The Annual Nut Race



Some of the participants who stayed for a photograph at the end of the race

There was a good turnout for this year's race thanks to the winter sunshine. The water level was a bit low but, with the help of the children, the nuts all made it down the burn to the finishing line. Everyone received a chocolate egg for taking part. Many thanks to Liz McDonnell for donating the chocolate eggs and cash prizes.

The prize-winning nuts were: 1st prize £25 - pale blue 42 - sponsored by Emma Boyes;
2nd prize £15 - yellow 5 - sponsored by Feli Stark;
3rd prize £5 - dark blue 74 - sponsored by Gwen Sangster.

Lockerbie Wildlife Trust would like to say a big thank you to all who sponsored a nut, gave a donation, helped organize the event or came along in person to support it.

The magnificent sum of £640 was raised and will be used to support the work of the Trust at the Reserve.

6. Conifer tree species planted above Eskrigg Reserve in February:

Family	Common Name	Scientific Name
Pinaceae (Pine Family)	Grand Fir (GF)	<i>Abies grandis</i>
	Norway Spruce (NS)	<i>Picea abies</i>
	Sitka Spruce (SS)	<i>Picea sitchensis</i>
	Scots Pine (SP)	<i>Pinus sylvestris</i>
	Douglas-fir (DF)	<i>Pseudotsuga menziesii</i>
	Western Hemlock (WH)	<i>Tsuga heterophylla</i>

Broad-leaved tree species planted above the Eskrigg Reserve in February:

Family	Common Name	Scientific Name
Betulaceae (Birch Family)	Hazel	<i>Corylus avellana</i>
Rosaceae (Rose Family)	European Crab Apple	<i>Malus sylvestris</i>
	Rowan / Mountain Ash	<i>Sorbus aucuparia</i>
Salicaceae (Willow Family)	Goat/Pussy Willow	<i>Salix caprea</i>

Jim Rae (Eskrigg Reserve Manager)

Address: Carradale, 12 Douglas Terrace, Lockerbie, Dumfries and Galloway, DG11 2DZ.

Home Tel.: 01576 203 314 / Mobile No.: 07739 987 009

Email: jim.rae2012@gmail.com