

Lockerbie Wildlife Trust

(www.lockerbie-wildlife-trust.co.uk)

Eskrigg Reserve

July 2018 News Bulletin



Scottish Charity No:
SC 005538

1. View of the pond on the 24th of July - lowest water level for many years.



2. Confirmed wildlife sightings at the Reserve during July.

a. Birds

Blackbird, Blue Tit, Bullfinch, Buzzard, Carrion Crow, Chaffinch, Chiffchaff, Coal Tit, Collared Dove, Dunnock, Goldfinch, Great Spotted Woodpecker, Great Tit, Greenfinch, Grey Heron, House Martin, House Sparrow, Jackdaw, Jay, Mallard, Moorhen, Mute Swan, Nuthatch, Oystercatcher, Pheasant, Pied Wagtail, Raven, Robin, Siskin, Song Thrush, Sparrowhawk, Starling, Stock Dove, Swallow, Swift, Treecreeper, Willow Warbler, Wood Pigeon, Wren, Yellowhammer.



b. Mammals

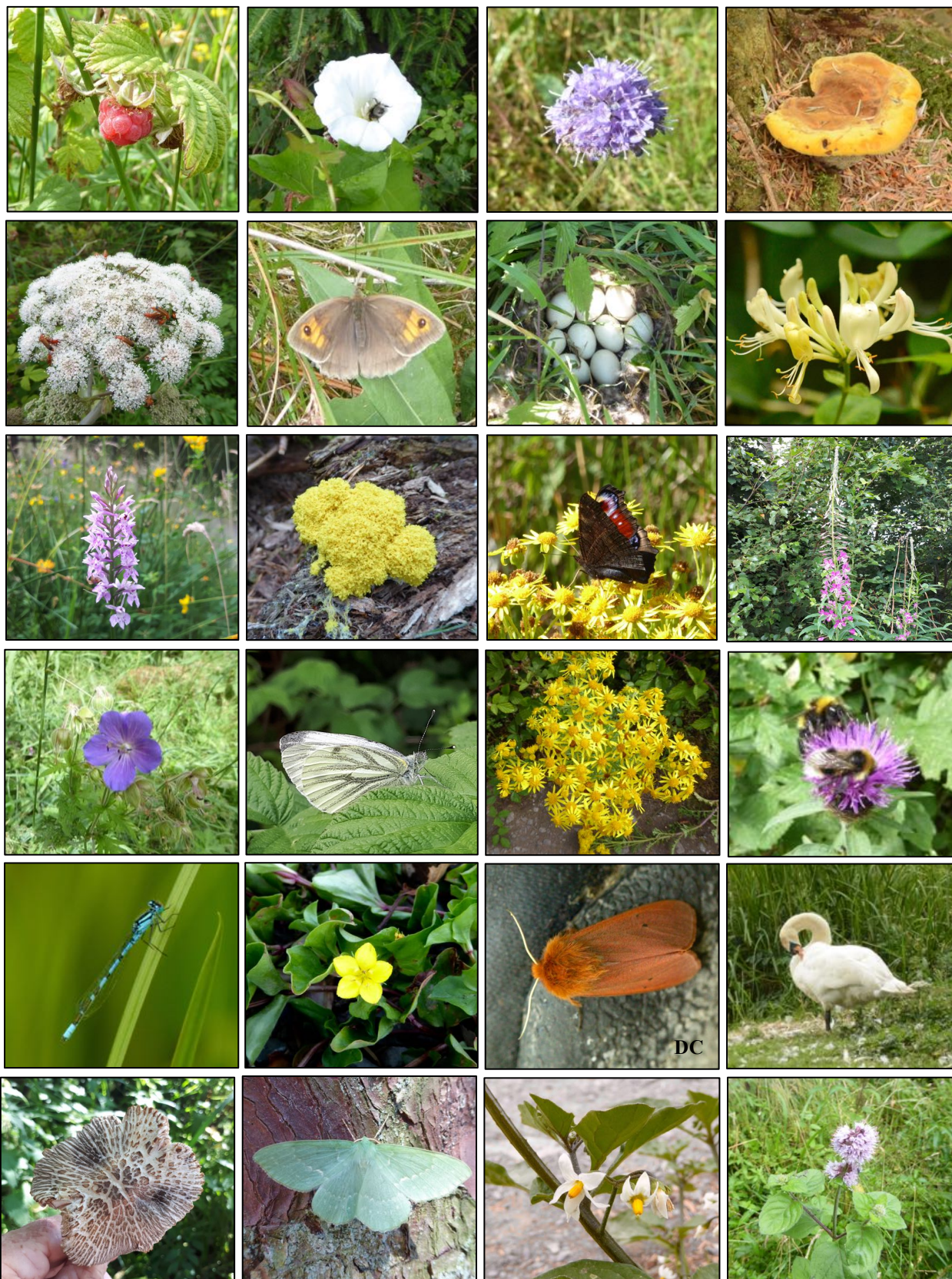
Badger, Bandit Pipistrelle Bat, Common Shrew, Mole, Rabbit, Red Squirrel, Roe Deer, Stoat, Woodmouse.



Roe Deer near Red Squirrel Hide by AM

Photographs by Andrew Moulstone (AM) and Jim Rae (JR)

3. July Photo Gallery



Row 1: Wild Raspberry, Large Bindweed, Devil's-bit Scabious, Dyer's Mazegill.

Row 2: Soldier Beetles on Wild Angelica, Meadow Brown Butterfly, Mallard nest with eggs, Honeysuckle.

Row 3: Common Spotted Orchid, Scrambled Egg Slime Mould, Peacock Butterfly, Rosebay Willowherb.

Row 4: Meadow Crane's-bill, Green-veined White Butterfly, Ragwort, White-tailed Bumblebees on Knapweed.

Row 5: Common Blue Damselfly, Yellow Pimpernel, Ruby Tiger Moth (DC), Mute Swan.

Row 6: *Pluteus ephebeus*, Large Emerald Moth, Black Nightshade, Water Mint.

Photographs by Jim Rae and David Cardie (DC)

4. Planned Activities in July

Tue. 3rd Moth Trapping

Macro-moths

Common Name	Scientific Name	Number
Barred Red	<i>Hylaea fasciaria</i>	2
Barred Straw	<i>Eulithis pyraliata</i>	16
Bordered White	<i>Bupalus piniaria</i>	1
Bright-line Brown-eye	<i>Lacanobia oleracea</i>	3
Burnished Brass	<i>Diachrysia chrysitis</i>	3
Clouded Border	<i>Lomaspilis marginata</i>	11
Common Wainscot	<i>Mythimna pallens</i>	18
Common Wave	<i>Cabera exanthemata</i>	2
Common White Wave	<i>Cabera pusaria</i>	3
Double-square Spot	<i>Xestia triangulum</i>	1
Early Thorn	<i>Selenia dentaria</i>	1
Elephant Hawkmoth	<i>Deilephila elpenor</i>	1
Engrailed	<i>Ectropis bistortata</i>	1
Flame	<i>Axylia putris</i>	1
Flame Carpet	<i>Xanthorhoe designata</i>	1
Four-dotted Footman	<i>Cybosia mesomella</i>	1
Gothic	<i>Naenia typica</i>	1
Green Carpet	<i>Colostygia pectinataria</i>	4
Hebrew Character	<i>Orthosia gothica</i>	1
Ingrailed Clay	<i>Diarsia mendica</i>	13
July Highflyer	<i>Hydriomena furcata</i>	2
Large Emerald	<i>Geometra papilionaria</i>	1
Lempke's Gold Spot	<i>Plusia putnami</i>	2
Light Emerald	<i>Campaea margaritata</i>	4
Lychnis	<i>Hadena bicurris</i>	1
Map-winged Swift	<i>Hepialus fusconebulosa</i>	1
Marbled Minor	<i>Oligia strigilis</i>	6
Middle-barred Minor	<i>Oligia fasciuncula</i>	3
Mottled Beauty	<i>Alcis repandata</i>	22
Northern Spinach	<i>Eulithis populata</i>	12
Poplar Hawkmoth	<i>Laotloe populi</i>	2
Purple Clay	<i>Diarsia brunnea</i>	7
Rufous Minor	<i>Oligia versicolor</i>	1
Riband Wave	<i>Idaea aversata ab remutata</i>	7
Silver-ground Carpet	<i>Xanthorhoe montanata</i>	1
Silver Y	<i>Autographa gamma</i>	2
Small Argent and Sable	<i>Epirrhoe tristata</i>	1
Small Square-spot	<i>Diarsia rubi</i>	3
Small Wainscot	<i>Chortodes pygmina</i>	4
Smoky Wainscot	<i>Mythimna impura</i>	8
Snout	<i>Hypena proboscidalis</i>	1
Straw Dot	<i>Rivula sericealis</i>	2
Tawny Marbled Minor	<i>Oligia latruncula</i>	1
White Ermine	<i>Spilosoma lubricipeda</i>	1



Unfortunately, the photograph of the
Lychnis
was not in sharp focus.



Burnished Brass



Garden Tiger



Lempke's Gold Spot



Early Thorn



Small Square-spot



Tawny Marbled Minor

Micro-moths

A micro-moth	<i>Acleris kochiella</i>	1
A micro-moth	<i>Agriphila straminella</i>	1
A micro-moth	<i>Celypha lacunana</i>	11
A micro-moth	<i>Crambus perllella</i>	1
Brown China-mark	<i>Elophila nymphaeata</i>	1
A micro-moth	<i>Eudonia delunella</i>	4
A micro-moth	<i>Eudonia lacustrata</i>	2
A micro-moth	<i>Eudonia lineola</i>	6
A micro-moth	<i>Eudonia mercurella</i>	2
A micro-moth	<i>Eudonia truncicolella</i>	6
A micro-moth	<i>Hedya ochroleucana</i>	1
Plum Tortrix	<i>Hedya pruniana</i>	1
Barred Fruit-tree Tortrix	<i>Pandemis cerasana</i>	1
A micro-moth	<i>Pandemis cinnamomeana</i>	1
A micro-moth	<i>Scoparia ambigualis</i>	5
A micro-moth	<i>Scoparia ancipitella</i>	2
A micro-moth	<i>Scoparia basistrigalis</i>	4
A micro-moth	<i>Scoparia pyralella</i>	1
A micro-moth	<i>Scoparia subfusca</i>	1



Acleris kochiella



Eudonia lineola



Hedya ochroleucana

Photographs by Jim Rae

4. Planned Activities in July (continued)

Tue. 3rd Children from **Mid-Annandale Playcare (MAP)** came to the Reserve to study the Wee Woodland Beasties and help release some of the moths caught during the previous night.

Wed. 4th Visit by **Abbey Camera Club**.

Mon. 16th Visit by **Aberlour Group**

Sat. 21st **Lockerbie Wildlife Trust** had a stall at the **Farmers' Market** in Lockerbie to promote the Reserve and raise a few funds.

Wed. 25th Visit by **Scruffs Childcare** from **Castle Douglas**
The children took part in a Gruffalo Hunt, a Scavenger Hunt and identified Woodland Mini-beasts and broad-leaved trees from their leaves.



Mon. 30th The Reserve was visited by members of the **Parent Inclusion Network (PIN)** - one group in the morning and another group in the afternoon.



PIN - Morning group



PIN - Afternoon group

The PIN groups each investigated the Woodland Mini-beasts then had a walk through the woods, doing a scavenger hunt and identifying the trees, flowers and anything else discovered en route.

5. Volunteer Activities in July

Sat. 7th In the morning, **Lewis Carrick** helped **Jim Rae** lay gravel on the new woodland path (the Northern Loop).

In the afternoon, **Jim Rae** attached wire mesh to the bridge over the feeder burn.

Sun. 8th In the morning, **Jim** repaired boards at the entrance to the East Hide, propped up the boardwalk and cleared some logs that had been used for building dens.

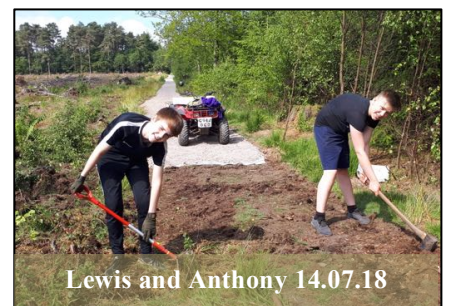
In the afternoon, **Jim** added three trailer loads of type 1 sub-base to the new path.

Tue. 10th In the morning, **Jim** visited BPI, in Dumfries, to get prices for recycled plastic timber.

In the afternoon, **Jim** worked on the new path.

Wed. 11th, Thu. 12th & Fri. 13th **Jim** worked on the new path, clearing turf and tree roots, laying terram membrane and laying type 1 sub-base.

Sat. 14th **Anthony Ison** and **Lewis Carrick** helped **Jim** complete another section of the new path.



Photographs by Jim Rae

Wed. 18th and Thu. 19th A Helping Hand



Removing tree stump

Ross Gemmell, Dumfries & Galloway Countryside Ranger, brought a small digger and helped **Jim** with the new path. **Ross** used the digger to remove some tree stumps, level some sections of the path and load the trailer with gravel. This extra help was greatly appreciated.



Loading trailer with gravel

Tue. 24th **Jim** applied three loads of gravel topping to the new path.

Wed. 25th **Louise Herron** helped **Jim** with the group from Scruffs Childcare before they created a new access ramp to the wheat feeder for the Swans and Mallard Duck.

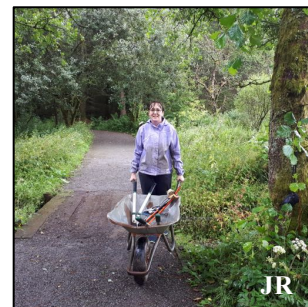
Thu. 26th & Fri. 27th **Jim** applied topping to the new path.

Sat. 28th **Jim** applied topping to the new path in the morning, then joined the Butterfly Walk at Birkshaw in the early afternoon. On returning to the Reserve, he then cleared some of the branches from a willow tree that had been blown down over the Reserve path to allow access.

Sun. 29th Reserve Maintenance day



This was rather a wet day.
However, a new volunteer **Shona Devlin** came along and helped **Jim** cut up and clear a lot more of the fallen willow.



6. **Janet Brunton's** beautiful picture of the cygnet, taken at Eskrigg Reserve, has been personally selected by Chris Packham to represent the month of May in the Humane Research Trust's 2019 Pet & Wildlife Photo Calendar. The Humane Trust exists to research and implement the available alternatives to animal testing.

Well done, Janet.



Photographs by Jim Rae

Jim Rae (Eskrigg Reserve Manager)
Address: Carradale, 12 Douglas Terrace, Lockerbie, Dumfries and Galloway, DG11 2DZ.
Home Tel.: 01576 203 314 / **Mobile No.:** 07739 987 009
Email: jim.rae2012@gmail.com