

Lockerbie Wildlife Trust

(www.lockerbie-wildlife-trust.co.uk)

Eskrigg Reserve

June 2018 News Bulletin



Scottish Charity No:
SC 005538

1. Views of the pond on the 3rd and 28th of June.



2. Confirmed wildlife sightings at the Reserve during June.

a. Birds

Blackbird, Blackcap, Black-headed Gull, Blue Tit, Bullfinch, Buzzard, Carrion Crow, Chaffinch, Chiffchaff, Coal Tit, Collared Dove, Crossbill, Dunnock, Goldcrest, Goldfinch, Grasshopper Warbler, Great Spotted Woodpecker, Great Tit, Greenfinch, Grey Heron, House Martin, House Sparrow, Jackdaw, Jay, Kestrel, Lapwing, Lesser Redpoll, Long-tailed Tit, Mallard, Meadow Pipit, Mistle Thrush, Moorhen, Mute Swan, Nuthatch, Pheasant, Pied Wagtail, Raven, Reed Bunting, Robin, Rook, Siskin, Song Thrush, Sparrowhawk, Starling, Stock Dove, Swallow, Swift, Tawny Owl, Willow Warbler, Wood Pigeon, Wren.



Female Reed Bunting (DA)

b. Mammals

Brown Hare, Mole, Rabbit, Red Squirrel, Roe Deer, Stoat.

c. Reptiles, Amphibians and Fish

Common Lizard, Frog, Toad, Stickleback.

d. Invertebrates

Butterflies: Gatekeeper, Green-veined White, Large Skipper, Meadow Brown, Orange-tip, Red Admiral, Ringlet, Small Pearl-bordered Fritillary, Small Heath.

Moths: Chimney Sweeper, Water Carpet.

Damselflies: Azure, Blue-tailed, Common Blue, Large Red.



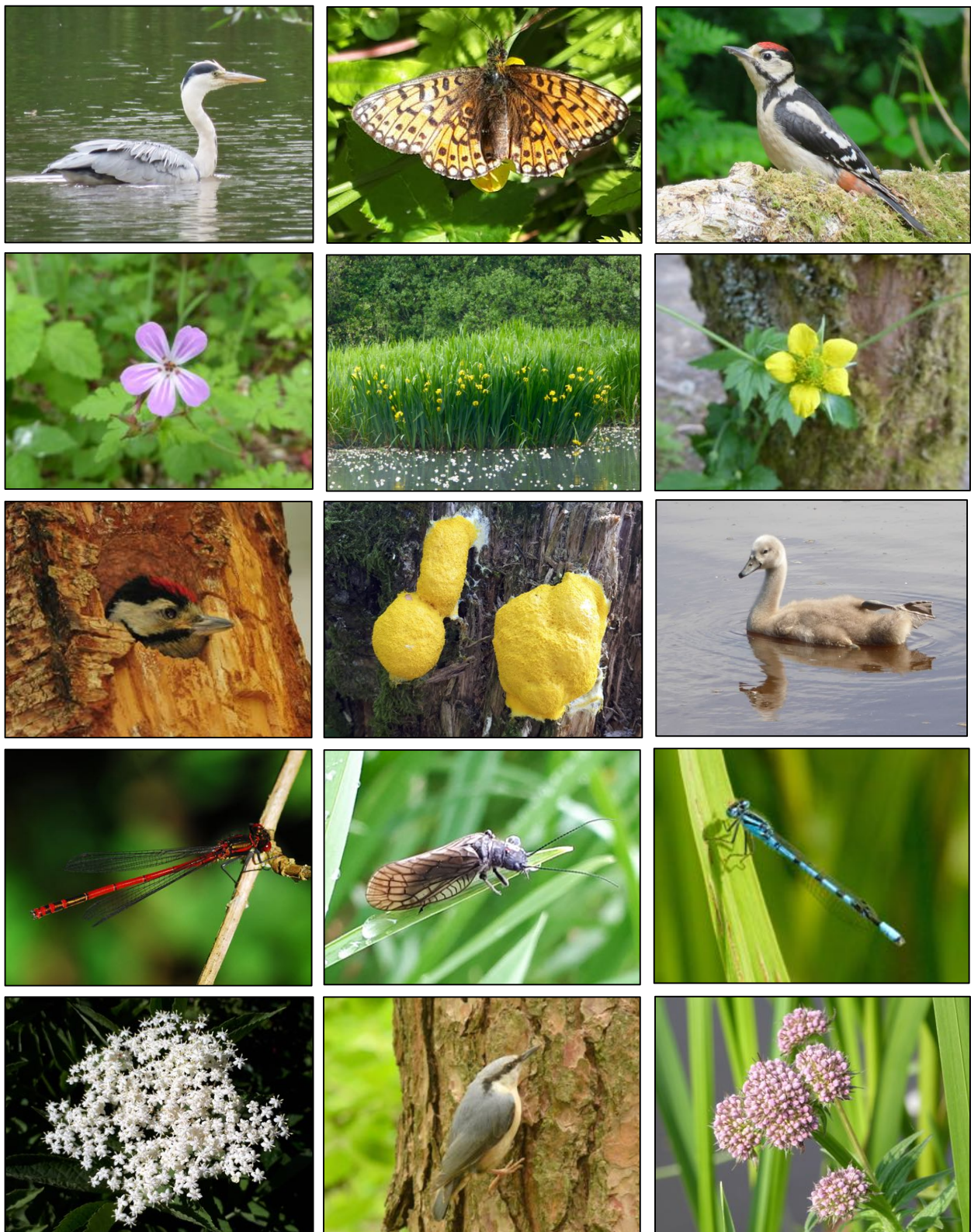
Small Heath (JR)



Large Skipper (JR)

Photographs by Jim Rae (JR) and David Allan (DA)

3. June Photo Gallery



Row 1: Grey Heron swimming (DA), Small Pearl-bordered Fritillary (JR), Juvenile Great Spotted Woodpecker (DA)

Row 2: Herb Robert (JR), Flag Iris (JR), Wood Aven (JR)

Row 3: Great Spotted Woodpecker chick (DA), Scrambled Egg Slime Mould (JR), Mute Swan cygnet (JR)

Row 4: Large Red Damselfly (GT), Alder Fly (JR), Common Blue Damselfly (JR)

Row 5: Elder Flowers (JR), Young Nuthatch (DA), Common Valerian (JR)

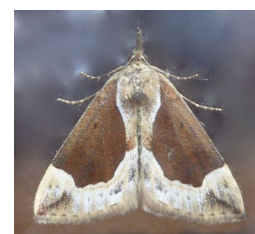
Photographs by David Allan (DA), George Trudt (GT) and Jim Rae (JR)

4. Planned Activities in June

Thu. 7th Moth Trapping

Macro-moths

Common Name	Scientific Name	Pond Fringe	Pine Wood
Beautiful Snout	<i>Hypena crassalis</i>	-	2
Bordered White	<i>Bupalus piniaria</i>	-	2
Brimstone	<i>Opisthograptis luteolata</i>	-	1
Broken-barred Carpet	<i>Electrophaes corylata</i>	2	-
Brown Silver-line	<i>Petrophora chlorosata</i>	-	1
Buff Ermine	<i>Spilosoma luteum</i>	5	1
Buff-tip	<i>Phalera bucephala</i>	1	2
Campion	<i>Hadena rivularis</i>	3	-
Clouded Border	<i>Lomaspilis marginata</i>	14	3
Common Carpet	<i>Epirrhoe alternata</i>	3	-
Common Marbled Carpet	<i>Chloroclysta truncata</i>	2	2
Common Pug	<i>Eupithecia vulgata</i>	2	-
Common Wave	<i>Cabera exanthemata</i>	7	1
Common White Wave	<i>Cabera pusaria</i>	2	-
Coxcomb Prominent	<i>Ptilodon capucina</i>	3	-
Engrailed	<i>Ectropis bistortata</i>	1	-
Flame Shoulder	<i>Ochropleura plecta</i>	3	-
Four-dotted Footman	<i>Cybosia mesomella</i>	1	-
Green Silver-lines	<i>Pseudoips prasinana</i>	1	-
Lesser Swallow Prominent	<i>Pheosia gnoma</i>	2	-
Map-winged Swift	<i>Hepialus fusconebulosa</i>	8	-
Nut-tree Tussock	<i>Colocasia coryli</i>	1	4
Pale Prominent	<i>Pterostoma palpina</i>	1	1
Pale-shouldered Brocade	<i>Lacanobia thalassina</i>	1	-
Pebble Prominent	<i>Notodonta ziczac</i>	1	-
Poplar Hawkmoth	<i>Laothoe populi</i>	4	2
Scalloped Hazel	<i>Odontopera bidentata</i>	4	-
Scalloped Hook-tip	<i>Falcaria lacertinaria</i>	1	-
Scorched Wing	<i>Plagodis dolabraria</i>	3	1
Silver-ground Carpet	<i>Xanthorhoe montanata</i>	1	-
Small Angle Shades	<i>Euplexia lucipara</i>	-	2
Small Phoenix	<i>Ecliptopera silaceata</i>	1	2
Small Rivulet	<i>Perizoma alchemillata</i>	1	-
Small Square-spot	<i>Diarsia rubi</i>	8	-
Spruce Carpet	<i>Thera britannica</i>	3	-
Tawny-barred Angle	<i>Macaria liturata</i>	1	-
Water Carpet	<i>Lampropteryx suffumata</i>	4	-
Welsh Wave	<i>Venusia cambrica</i>	1	1
White Ermine	<i>Spilosoma lubricipeda</i>	6	1
39 species	Totals	102	29



Beautiful Snout



Broken-barred Carpet



Buff Ermine



Flame Shoulder



Green Silverlines



Lesser Swallow Prominent



Small Angle Shades

Micro-moths

Common Name	Scientific Name	Pond Fringe	Pine Wood
No common name	<i>Bactra lancealana</i>	6	-
No common name	<i>Celypha lacunana</i>	6	-
No common name	<i>Epinotia bilunana</i>	2	-
No common name	<i>Eudonia delunella</i>	2	-
No common name	<i>Scoparia subfusca</i>	1	-
No common name	<i>Tinea semifulvella</i>	1	-
6 species	Totals	18	-



Scorched Wing



Bactra lancealana *Celypha lacunana* *Epinotia bilunana* *Eudonia delunella* *Scoparia subfusca* *Tinea semifulvella*

Photographs by Jim Rae

4. Planned Activities in June (continued)

Thu. 7th A group of **Senior Citizens from Shawhead** visited the Reserve for the afternoon and were given a guided tour by **Jim Rae**. They had an enjoyable experience and loved watching the Red Squirrels, cygnets and ducklings.



Sat. 16th Despite the wet conditions, members of the **Dumfriesshire Trefoil Guild** were given a guided tour of the Reserve by **Jim Rae** in the morning. In the afternoon, the group went up to Eskdalemuir to visit Samye Ling.



Wed. 20th Thirty-six primary 4/5 pupils and staff from **Langholm Primary School** visited Eskrigg. They were divided into 3 groups of 12 pupils. The 3 groups rotated round three activities, with snack breaks in between - Pond Dipping with **Jim Rae**, Woodland Mini-beasts with **Norah Muirhead** and a scavenger hunt with **Julie McCauley**.

There was a good range of woodland invertebrates, but low numbers of the pond invertebrates because of the lack of pond weed.



Fri. 22nd In the morning, 30 children from **Lockerbie Nursery** (with **John Gillies** and other staff) visited the Reserve. Another 29 children visited in the afternoon. Activities, led by **Jim Rae**, included, story telling, Gruffalo Hunt, Woodland Mini-beasts, Flower Search and Tree Leaf Spotting, with appropriate snack and toilet breaks.



Wed. 27th Four and five year old children from Sparkles Nursery, Gretna, visited the Reserve. In the morning they had some story telling, a Gruffalo Hunt, a Woodland Mini-beast Hunt and a guided walk through the woods. After lunch they explored the heathland area and enjoyed tree-climbing.



Thu. 28th **Jim Rae** and **Kath Davidson** were invited to the University of Glasgow School of Interdisciplinary Studies, Crichton Campus, to receive a cheque for **£993.78** from Professor Carol Hill.

Professor Hill said "Eskrigg Nature Reserve was chosen as this year's charity because of its distinctive nature, the many good things it achieves for local communities and its special interest to our students taking degrees in Environmental Science, Sustainability and Environmental Culture and Communication".



5. Volunteer Activities in June

Sat. 2nd In the morning, **Jim Rae** strimmed the grass at the Cemetery Lodge entrance, while **Lewis Carrick** and **Neil Stewart** raked up the grass cuttings. They then met up with Julie McCauley to plan for a visit by Langholm Primary pupils. In the afternoon, **Jim** strimmed and cleared the path beside the Dumfries Road.



Sun. 3rd **Nigel Boyd**, Glenannan Avenue, reported seeing a grey squirrel in his garden and crossing the road. In the late afternoon **Jim** met with **Roger Barnes** (1 Glenannan Avenue) and made arrangements to put up and bait a live squirrel trap. **Nigel** and his neighbours agreed to keep watch on the trap to see if the grey squirrel returned. The trap was baited for 2 days, then set for 2 days, but the squirrel never returned and the trap was removed.

Thu. 14th **Jim Rae** raked the Reserve paths after the strong winds the previous night. Many large trees were blown over around the perimeter of the recently harvested Scots Pine.



Fri. 15th **Jim Rae** strimmed and raked the paths at the Cemetery entrance and raked the woodland paths that branch off from the Reserve path.

Tue. 19th In the morning, **Jim Rae** strimmed the sides of the Reserve path while **Steven Jackson**, a student from Lockerbie, helped rake up the grass cuttings. Jim continued the tidy up during the afternoon.

Sun. 24th Maintenance Day

Jim Rae spent the whole day strimming the sides of the car park and path as far as the granite seat and clearing the grass cuttings. Unfortunately, there were no other members available to help.



Tue. 26th **Jim Rae** strimmed and cleared the path beyond the granite seat.

Thu. 28th **Jim Rae** strimmed around the picnic tables, the area next to the Red Squirrel Hide and the sides of the boardwalk.

Sat. 30th Members of the E-Team, **Heather Donaldson**, **Lewis Carrick** and **Anthony Ison**, helped **Jim Rae** lay terram membrane and type-1 sub-base on another section of the Woodland Walks.



6. Interesting moth sightings around Lockerbie
24th June:

A mating pair of Lunar Hornet Clearwing moths was photographed by Clem Maggiori at 17 Ashgrove Terrace in Lockerbie.

Wingspan 32-42 mm.

This is one of several similar 'mimic' species, known as Clearwings. It is one of the largest, and presents a fearsome sight to the uninitiated.

The adults are rarely seen. Best looked for in July, as the adults emerge and rest low down on the trunks of the food plants, sallow and willow (*Salix spp.*) in the morning.

The eggs are laid on the bark and the larvae burrow into the wood, feeding internally.



Lunar Hornet Clearwing - mating pair
(*Sesia bembeciformis*)

28th June:

A large number of Narrow-bordered Five-spot Burnet moths was recorded by Jim Rae at the side of the service road (B7076) that passes through Lockerbie (grid reference NY 13513 80771). They were flying around in the sunshine like red and black mini-drones, landing on the flowers of the Marsh Thistle, Bird's-foot Trefoil and Strawberry Clover.

Very similar to and sometimes difficult to distinguish from the Five-spot Burnet. In general, the forewing of the Narrow-bordered Five-spot Burnet is longer and more pointed, the upper angle of the hindwing is more pointed and the black border of the hindwing is narrower than those of the Five-spot Burnet. Sometimes, although infrequently, the red colour is replaced by yellow. They also feed on knapweeds and scabious when these come into flower.



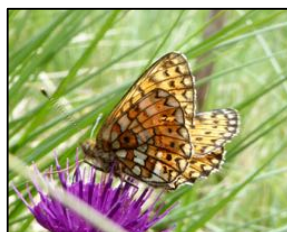
Narrow-bordered 5-spot Burnet
(*Zygaena lonicerae jocelynae*)

7. Sat. 23rd Ten members of the Lockerbie Wildlife Trust visited Carrifran Wildwood and guided up the valley by Philip Ashmole, project leader of the Wildwood Group.

This spectacular ice-carved glen was bought by Borders Forest Trust on the 1st of January 2000, after two years of fundraising by the Wildwood Group. Carrifran is part of the Moffat Hills Site of Special Scientific Interest and Special Area of Conservation. It extends to over 650 hectares, from an altitude of 160m by the road to 821m at the summit of White Coomb.

The Wildwood project aims to re-create, in the Southern Uplands, an extensive tract of mainly forested wilderness with most of the rich diversity of native species present in the area before human activity became dominant.

The LWT group was able to witness a wide range of plant and animal species that, until recently, were either restricted to steep areas inaccessible to sheep and goats or had not been seen in the valley, perhaps for hundreds of years.



Photographs by Jim Rae

Jim Rae (Eskrigg Reserve Manager)

Address: Carradale, 12 Douglas Terrace, Lockerbie, Dumfries and Galloway, DG11 2DZ.

Home Tel.: 01576 203 314 / Mobile No.: 07739 987 009

Email: jim.rae2012@gmail.com