

# Lockerbie Wildlife Trust

(www.lockerbie-wildlife-trust.co.uk)

## Eskrigg Reserve

### July 2017 News Bulletin



Scottish Charity No:  
SC 005538

#### 1. Eskrigg Pond on the 31<sup>st</sup> July.



Taken at 07:30 hrs.



Taken at 17:30 hrs

#### 2. Confirmed wildlife sightings at the Reserve in July.

##### a. Birds

Blackbird, Blue Tit, Bullfinch, Buzzard, Carrion Crow, Chaffinch, Chiffchaff, Coal Tit, Common Gull, Crossbill, Dunnock, Great Spotted Woodpecker, Great Tit, Grey Heron, Grey Wagtail, House Martin, House Sparrow, Jackdaw, Jay, Kingfisher, Little Grebe, Long-tailed Tit, Mallard, Mandarin, Mistle Thrush, Moorhen, Mute Swan, Nuthatch, Oystercatcher, Pheasant, Raven, Robin, Rook, Siskin, Song Thrush, Sparrowhawk, Starling, Stock Dove, Swallow, Swift, Treecreeper, Willow Tit, Wood Pigeon, Wood Warbler, Wren.



Common Crossbill (BM)

##### b. Mammals

Bank Vole, Common Shrew, Fox, Mole, Rabbit, Red Squirrel, Roe Deer, Stoat, Wood Mouse.



Red Squirrel (JR)

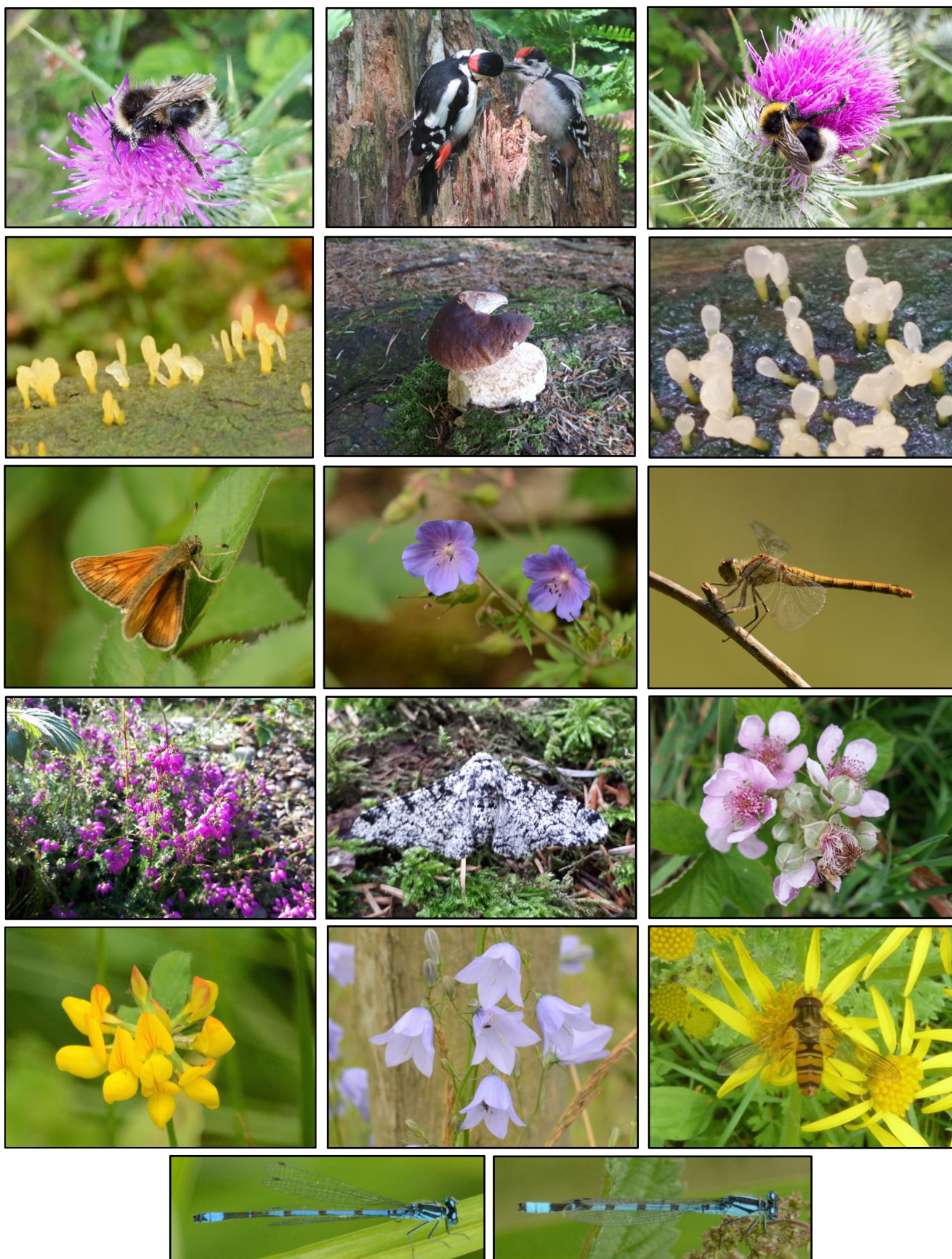
##### c. Fish, Amphibians and Reptiles

Minnow, Stickleback, Common Frog, Common Toad, Common Lizard.

Photographs by Brian Murphy (BM) and Jim Rae (JR).



### 3. July Photo Gallery



Row 1: Forest Cuckoo Bumblebee (JR), Great Spotted Woodpecker (PW), Gypsy Cuckoo Bumblebee (JR).

Row 2: Small Stagshorn (JR), Cep / Penny Bun (JR), Pale Stagshorn (JR).

Row 3: Large Skipper (JR), Meadow Cranesbill (JR), Common Darter (JR).

Row 4: Bell Heather (JR), Peppered Moth (JR), Bramble (JR).

Row 5: Bird's-foot Trefoil (JR), Harebell (JR), Ragwort with hoverfly - *Episyrphus balteatus* - (JR).

Row 6: Azure Damselfly (JR), Common Blue Damselfly (JR).

Photographs by Paul Wharton (PW) and Jim Rae (JR)



#### 4. Planned Activities in July

##### Tue. 4<sup>th</sup> Visit by U3A Rambling Club.

Members of the club enjoyed a visit to the Reserve and Woodland Walks despite the somewhat inclement weather.

**Fri. 7<sup>th</sup> Helen Dickinson** of the **Bumblebee Conservation Trust** ran a **Bumblebee ID** event at Lockerbie Town Hall followed by a field visit to Eskrigg Reserve. Despite the rain, a number of bumblebees were spotted:

Early Bumblebee (worker)	<i>Bombus pratorum</i>
Forest Cuckoo Bumblebee (male)	<i>Bombus sylvestris</i>
Garden Bumblebee	<i>Bombus hortorum</i>
Gypsy Cuckoo Bumblebee	<i>Bombus bohemicus</i>
White-tailed Bumblebee	<i>Bombus lucorum</i>

Other bee species previously identified at Eskrigg Reserve include:

Bilberry Bumblebee	<i>Bombus monticola</i>
Buff-tailed Bumblebee	<i>Bombus terrestris</i>
Common Carder Bumblebee	<i>Bombus pascuorum</i>
Honey Bee	<i>Apis mellifera</i>
Leaf-cutter Bee*	<i>Megachile centuncularis</i>
Orange-horned Nomad	<i>Nomada fulvicornis</i>
Red-tailed Bumblebee	<i>Bombus lapidarius</i>
Tree Bumblebee	<i>Bombus hypnorum</i>

\* Found in railway sleeper donated by local farmer.

##### Wed. 12<sup>th</sup> Visit by Collin Social Club

Members of the social club came in the afternoon to follow up on a talk Jim had given them about the Reserve.

##### Wildlife Weekend

##### Sat. 15<sup>th</sup> morning - July Moths

The following moths were caught at the pond fringe, in the Robinson trap, overnight.

##### Macro-moths

Barred Red	<i>Hylaea fasciaria</i>	2	Ingrailed Clay	<i>Diarsia mendica mendica</i>	9
Bright-line Brown-eye	<i>Lacanobia oleracea</i>	1	Iron Prominent	<i>Notodonta dromedarius</i>	1
Buff Footman	<i>Eilema depressa</i>	3	July Highflyer	<i>Hydriomena furcata</i>	4
Clouded Border	<i>Lomaspilis marginata</i>	3	L. Yellow Underwing	<i>Noctua pronuba</i>	7
Common Carpet	<i>Epirrhoe alternata alternata</i>	2	Light Emerald	<i>Campaea margaritata</i>	1
Common Lutestring	<i>Ochropacha duplaris</i>	1	Peach Blossom	<i>Thyatira batis</i>	1
Common Rustic	<i>Mesapamea secalis</i>	3	Pebble Prominent	<i>Notodonta ziczac</i>	2
Common Wainscot	<i>Mythimna pallens</i>	2	Peppered Moth	<i>Biston betularia</i>	1
Common Wave	<i>Cabera exanthemata</i>	4	Poplar Hawkmoth	<i>Laothoe populi</i>	5
Coxcomb Prominent	<i>Ptilodon capucina</i>	2	Riband Wave	<i>Idaea aversata</i>	3
Dotted Clay	<i>Xestia baja</i>	5	Silver Y	<i>Autographa gamma</i>	1
Double Lobed	<i>Apamea ophiogramma</i>	3	Small Wainscot	<i>Chortodes pygmina</i>	2
Early Thorn	<i>Selenia dentaria</i>	2	Smoky Wainscot	<i>Mythimna impura</i>	1
Elephant Hawkmoth	<i>Deilephila elpenor</i>	1	Snout	<i>Hypena proboscidalis</i>	1
Engrailed	<i>Ectropis bistortata</i>	3	Spectacle	<i>Abrostola tripartita</i>	1
Green Arches	<i>Anaplectoides prasina</i>	1	Straw Dot	<i>Rivula sericealis</i>	2
Green Carpet	<i>Colostyia pectinataria</i>	1	Welsh Wave	<i>Venusia cambrica</i>	5

##### Micro-moths

a micro-moth	<i>Celpha lacunana</i>	3
a micro-moth	<i>Eudonia lacustrata</i>	4
Barred Fruit-tree Tortrix	<i>Pandemis cerasana</i>	1
a micro-moth	<i>Pandemis cinnamomearna</i>	1
a micro-moth	<i>Scoparia ancipitella</i>	6
a micro-moth	<i>Scoparia bagistrigalis</i>	2
Dusky Pearl	<i>Udea prunalis</i>	1



*Nemophora degeerella*  
This female long-horn micro-moth was found last month but its identity only recently confirmed.



### Sat. 15<sup>th</sup> afternoon - Wee Woodland Beasties

Examination of the pitfall traps and log pile revealed the following animals:

Beetle larva	Earthworm	Frogs	Ground Beetles	Harvestmen	Millipedes
Rove Beetles	Slugs	Spiders	Springtails	Woodlice	

### Sun. 16<sup>th</sup> morning - Small Mammal Survey

The Longworth small mammal traps were set late on the Saturday evening.

Trap	Mammal	Trap	Mammal	Trap	Mammal	Trap	Mammal
1.	Common Shrew	2.	Bank Vole	3.	Empty	4.	Common Shrew
5.	Common Shrew	6.	Woodmouse	7.	Woodmouse	8.	Empty
9.	Empty	10.	Empty	11.	Bank Vole	12.	Bank Vole
13.	Bank Vole	14.	Empty	15.	Empty	16.	Empty

Note: In the case of the shrews, the animals had fed in the traps, left their droppings and escaped through the escape hole as required by law.

### Sun. 16<sup>th</sup> afternoon - Pond Dipping

The following pond animals were caught:

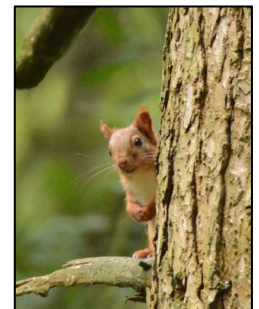
Sticklebacks, Back Swimmers, Lesser Water Boatmen, Mayfly Nymphs, Diving Beetle, Bloodworm.

Note: The number and range of species caught were very disappointing. This was due to the fact that all the submergent and emergent pondweed had disappeared during the spring and there was very little vegetation for the invertebrates to feed on. The reason for lack of pondweed is not clear.

### Wed. 19<sup>th</sup> Visit by Penrith Camera Club

Members of the club spent the late afternoon photographing the wildlife at the Reserve. The visitors were particularly keen to get some good squirrel shots. The squirrels, in turn, were equally fascinated by the visitors.

The group retired to the Kings Arms Hotel for a light supper before heading home.

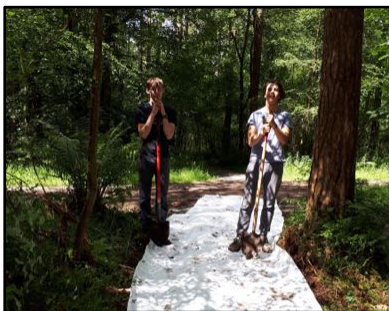


### Mon. 24<sup>th</sup> Visit by Loreburn Camera Club

The group came to the reserve during the evening. Unfortunately, the sky was overcast and the lighting was poor until the group were about to leave when things brightened up. The wildlife was keeping a low profile, with few squirrels around. However, the female mandarin did pose for photographs.

## 5. Volunteer Activities in July

**Sat. 1<sup>st</sup>** Patrick Malone and Rory Holden helped to rake the paths and resurface a new section of gravel path.



**Sat. 8<sup>th</sup>** Michael Kerr and Rory Holden helped Jim clear a ditch, clear branches and turf, lay a drainage pipe and then Terram membrane ready for resurfacing a new section of path. Jim worked on in the afternoon to lay and roll the gravel topping.



**Sun. 9<sup>th</sup>** Jim Rae strimmed the sides of the boardwalk.

**Tue. 11<sup>th</sup>** Scott Mitchell, John Wilson and Connor Jardine helped construct a new lid for the generator house. Meanwhile Jim showed Stephanie Johnstone (SSRS Conservation Officer) and Liz Gunby (SSRS Community Engagement Officer) round the Reserve.

**Tue. 18<sup>th</sup>** In the morning, Scott Mitchell and Jim Rae resurfaced part of a woodland path. In the afternoon they made repairs to the boardwalk and dug in three new pixie seats made by Stuart Black.

Photographs by Jim Rae



Scott on a pixie seat





**Tue. 25<sup>th</sup>** Colin McLean kindly came down to help Jim do some work on the pipeline path and clear the remains of the 10mm sub-base ready for a load of type 1 sub-base.

**Sat. 29<sup>th</sup>** Michael Kerr and Rory Holden helped Jim fill in the pot-holes on Eskrigg Farm road with type 1 sub-base.

In the afternoon, Jim strimmed the sides of the Reserve path.



### Sun. 30<sup>th</sup> - Reserve Maintenance Day

In the morning, Sybille Spägle, Jilly Polson and Jim Rae raked up the grass cuttings and weeded along the Reserve path. During the afternoon, Jilly and Jim cut down, and cut up, a large willow branch that was hanging over the pond and cutting out a lot of light.

## 6. Slime Mould - *Stemonitis axifera* - found 08.07.17

### 1. Structure

**Plasmodium:** white

**Sporangia:** narrowly cylindrical, in dense and often large clusters 10 to 50 mm in diameter, stalked, usually curved, becoming rusty brown, total height 7-20 mm with individual sporangium that are 0.2 to 0.3 mm in diameter.

**Stalk:** black, 3 to 7 mm high, rising from a membranous hypothallus.

**Columella:** ending below the summit of the sporangium.

**Capillitium:** with a smooth and usually close surface-net connected with the columella by few stout branches, and composed of rather firm threads bounding rounded meshes, which are usually small although varying in size.

**Spores:** brown 5 to 7µm in diameter and almost smooth (minutely punctuate).



### 2. Development

*Stemonitis axifera* requires about 20 hours to finish making its fruiting bodies. Of this, eight hours are needed for induction of the sporangia and the development of the stalk and the columella, six hours more for the sporocarps to produce pigment and mature, and an additional six until the spores are discharged.

### 3. Ecology

Habitat - Dead wood. The plasmodium is able to find its way through moist, decaying wood and emerge onto the dry log surface to start fruiting. When first formed, the fruit bodies consist of milky white sporangia and are a favoured food source for slugs. The slugs emerge at night from under flaps of bark and migrate to more exposed areas at the top of wet logs, bypassing more mature, pigmented sporangia for the younger white specimens.

### Unidentified Slime Mould



Photographs by Jim Rae

**Jim Rae (Eskrigg Reserve Manager)**

**Address: Carradale, 12 Douglas Terrace, Lockerbie, Dumfries and Galloway, DG11 2DZ.**

**Home Tel.: 01576 203 314 / Mobile No.: 07739 987 009**

**Email: jim.rae2012@gmail.com**