

Lockerbie Wildlife Trust

(www.lockerbie-wildlife-trust.co.uk)

Eskrigg Reserve

April 2017 News Bulletin



Scottish Charity No:
SC 005538

1. Eskrigg Pond on the 12th of April, by Jim Rae.



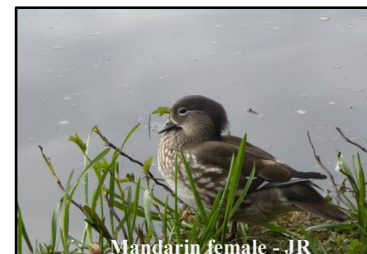
2. Confirmed wildlife sightings at the Reserve in March.

a. Birds



Grey Heron - DA

Blackbird, Blackcap, Black-headed Gull, Blue Tit, Bullfinch, Buzzard, Carrion Crow, Chaffinch, Chiffchaff, Coal Tit, Crossbill, Dunnock, Garden Warbler, Goldcrest, Goldfinch, Goshawk, Grasshopper Warbler, Great Spotted Woodpecker, Great Tit, Greenfinch, Grey Heron, Greylag Goose, Herring Gull, House Sparrow, Jackdaw, Jay, Lesser Redpoll, Little Grebe, Long-tailed Tit, Mallard, Mandarin, Mistle Thrush, Moorhen, Mute Swan, Nuthatch, Oystercatcher, Pheasant, Pied Flycatcher, Pied Wagtail, Raven, Robin, Siskin, Song Thrush, Sparrowhawk, Starling, Swallow, Tawny Owl, Treecreeper, Whitethroat, Willow Warbler, Wood Pigeon, Wren.



Mandarin female - JR

b. Mammals

Bank Vole, Common Shrew, Mole, Rabbit, Red Squirrel, Roe Deer, Stoat, Wood Mouse.



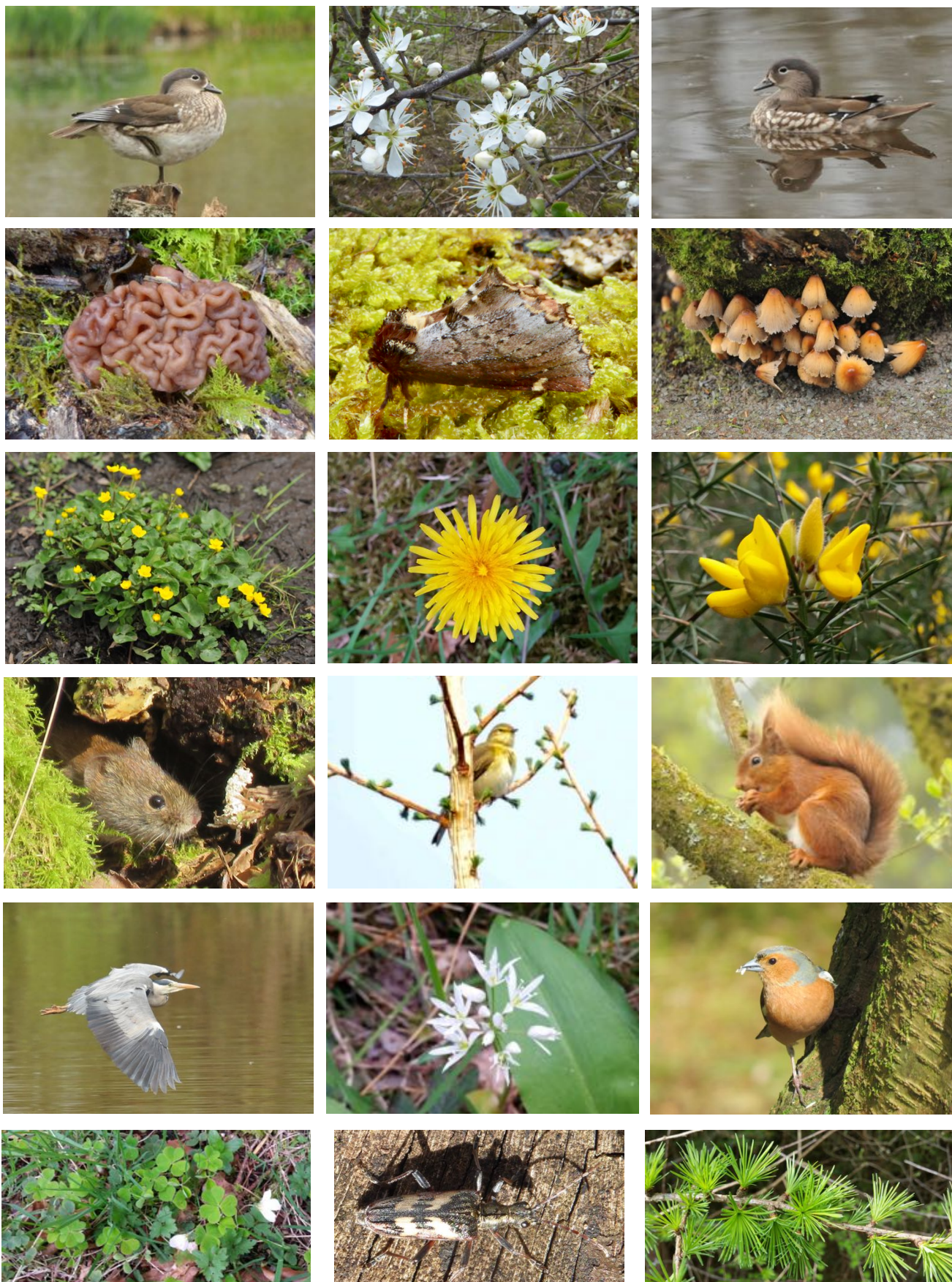
Stoat - DA

c. Fish, Amphibians and Reptiles

Common Frog, Common Toad, Stickleback.

Photographs by David Allan (DA), Jim Rae (JR).

3. April Photo Gallery



Row 1: Female Mandarin (JR), Blackthorn Blossom (JR), Female Mandarin (JR).
 Row 2: False Morel (JR), Scarce Prominent (JR), Glistening Inkcaps (JR).
 Row 3: Marsh Marigold (JR), Dandelion (JR), Gorse (JR).
 Row 4: Bank Vole (DA), Willow Warbler (JR), Red Squirrel (JR).
 Row 5: Grey Heron (JR), Wild Garlic (JR), Chaffinch (DA).
 Row 6: Wood Sorrel (JR), Longhorn Beetle (*Rhagium bifasciatum*), Larch Twig (JR).

Photographs: David Allan (DA), Jim Rae (JR).

4. Planned Activities in April

Thu. 6th - Spring Pondlife

The organisms found in the pond this Spring included:

<p style="text-align: center;">Vertebrates</p> <p>Fish Sticklebacks (m & f in breeding condition)</p> <p>Amphibians Tadpoles</p>	<p style="text-align: center;">Insects</p> <p>Damselfly nymph Mayfly nymphs (2 species) Alderfly nymph Water Beetle Lesser Water Boatman Water Scorpion larva Gnat pupa</p>	<p style="text-align: center;">Invertebrates</p> <p>Arachnids Water Mite</p> <p>Molluscs Pond Snail Pea Mussel</p> <p>Crustaceans Freshwater Shrimp</p>
---	--	---

Sun. 9th - Red Squirrel Walk

A small group had a walk through the woodland west of the Reserve and tried to spot squirrel dreys. There were several possible sightings but only three firm sightings.

Thu. 13th - Wee Woodland Beasties

The following organisms were found in the leaf litter and amongst the logs:

<p>Annelids Earthworm</p> <p>Crustaceans Woodlice</p> <p>Molluscs Slug Brown-lipped Snail</p>	<p style="text-align: center;">Insects</p> <p>Fly larvae Beetle larvae Ground Beetles Longhorn Beetle Leatherjacket Springtails</p>	<p style="text-align: center;">Arachnids</p> <p>Spiders Red Mite Tick</p> <p style="text-align: center;">Myriapods</p> <p>Centipede Millipede</p>
--	--	---



Slime Mould (*Lamprodema puncticulata*)

Unidentified fungus

Other Fungi: False Morel, Bleeding Porecrust, Scarlet Elfcup

Sun. 16th – April Moths with Alison Robertson and Jim Rae

Common Name	Scientific Name		
Micro-moth	<i>Diurnea fagella</i>		
Macro-moths		Common Name	Scientific Name
Brindled Pug	<i>Eupithecia abbreviata</i>	Hebrew Character	<i>Orthosia gothica</i>
Clouded Drab	<i>Orthosia incerta</i>	Pale Pinion	<i>Lithophane hepatica</i>
Common Quaker	<i>Orthosia cerasi</i>	Pine Beauty	<i>Panolis flammea</i>
Dark Sword-grass	<i>Agrotis ipsilon</i>	Scarce Prominent	<i>Odontotia carmelita</i>
Early Grey	<i>Xylocampa areola</i>	Small Quaker	<i>Orthosia cruda</i>
Early Tooth-striped	<i>Trichopteryx carpinata</i>	Twin-spotted Quaker	<i>Orthosia munda</i>
Engrailed	<i>Ectropis crepuscularia</i>		



Pictures by Jim Rae

5. Volunteer Activities in April

During the first week **Jim Rae**, with some help from **Jenny Norris**, laid the membrane and type one sub-base along the first section of the Bog Myrtle Path. During the second week, he spread and rolled the topping.



Sat. 15th - Michael Kerr, Patrick Malone and Rory Holden helped **Jim** bring in the long sleepers to support the ramp down from the bridge.

Sat. 22nd - Partick Malone and Rory Holden fixed boards to the sleepers in the morning. **Jim** finished the boards in the afternoon.

Tue. 25th - Connor Jardine helped **Jim** resurface part of the path from the car park down to the Reserve.

Sat. 29th - Patrick and Rory attached wire netting to one side of the ramp, while **Michael Kerr** helped **Jim** level the first part of the path beyond the ramp.



Sun. 30th – Maintenance Day

In the morning, **Sybille Spägle** and **David Hughes** finished attaching the wire netting to the ramp and levelling the path beyond while **Jim** finished resurfacing the path from the car park to the Reserve.

6. Mandarin Duck

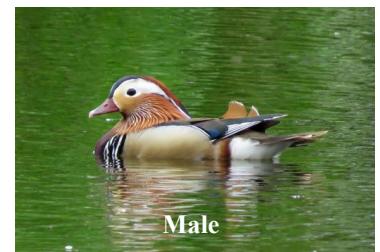


Female

In the past, a few individual male Mandarins have visited Eskrigg Reserve. This month we had our first female Mandarin visitor.

Mandarins are usually very quiet and may only call when displaying.

They are native to Far East Russia, East China and Japan. They were added to the



Male

British list in 1971. Over the years, many escaped or were released from private or public collections to breed in lochs and rivers bordered by trees or wooded areas. They now number over 7,000 in the UK.

Diet: Mandarins are omnivorous and feed on aquatic insects in Spring and Summer and mainly on vegetation at other times. In the Autumn, they feed on seeds and nuts, especially acorns. They also eat snails, a good source of calcium.

Breeding: They nest in holes in trees, especially oaks. The nest consists of a cup of down feathers. Breeding starts in mid-April and the female will lay 9-12 eggs. The eggs are incubated for about 28 days. The young quickly leave the nest and feed for themselves, usually cared for by the female. The young fly after 40 days and can breed when they are a year old.

Photographs by Jim Rae

For more information call Jim Rae or visit our website.

Jim Rae (Eskrigg Reserve Manager)

Address: Carradale, 12 Douglas Terrace, Lockerbie, Dumfries and Galloway, DG11 2DZ.

Home Tel.: 01576 203 314 / Mobile No.: 07739 987 009

Email: jim.rae2012@gmail.com