

Lockerbie Wildlife Trust

(www.lockerbie-wildlife-trust.co.uk)

Eskrigg Reserve

June 2016 News Bulletin



Scottish Charity No:
SC 005538

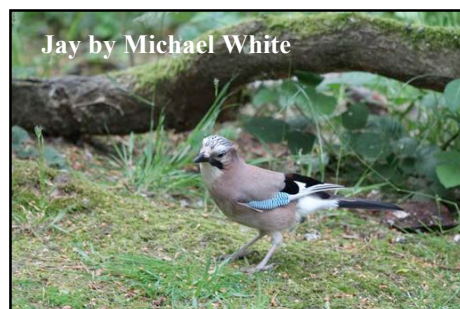
1. Views of the pond from the Red Squirrel Hide on the 1st of June by Jim Rae.



2. Confirmed wildlife sightings at the Reserve in June.

a. Birds

Blackbird, Black East Indian Duck, Blue Tit, Buzzard, Carrion Crow, Chaffinch, Chiffchaff, Coal Tit, Dunnock, Goldfinch, Great Spotted Woodpecker, Great Tit, Greenfinch, Grey Heron, Greylag Goose, Grey Wagtail, House Martin, House Sparrow, Jackdaw, Jay, Kestrel, Kingfisher, Mallard, Mandarin, Moorhen, Mute Swan, Nuthatch, Pheasant, Raven, Reed Bunting, Robin, Siskin, Song Thrush, Sparrowhawk, Starling, Stock Dove, Swallow, Treecreeper, Willow Warbler, Whitethroat, Wood Pigeon, Wren, Yellowhammer.



b. Mammals

Bank Vole, Fox, Mole, Noctule Bat, Rabbit, Red Squirrel, Roe Deer, Short-tailed Field Vole, Wood Mouse.

c. Reptiles and Amphibians

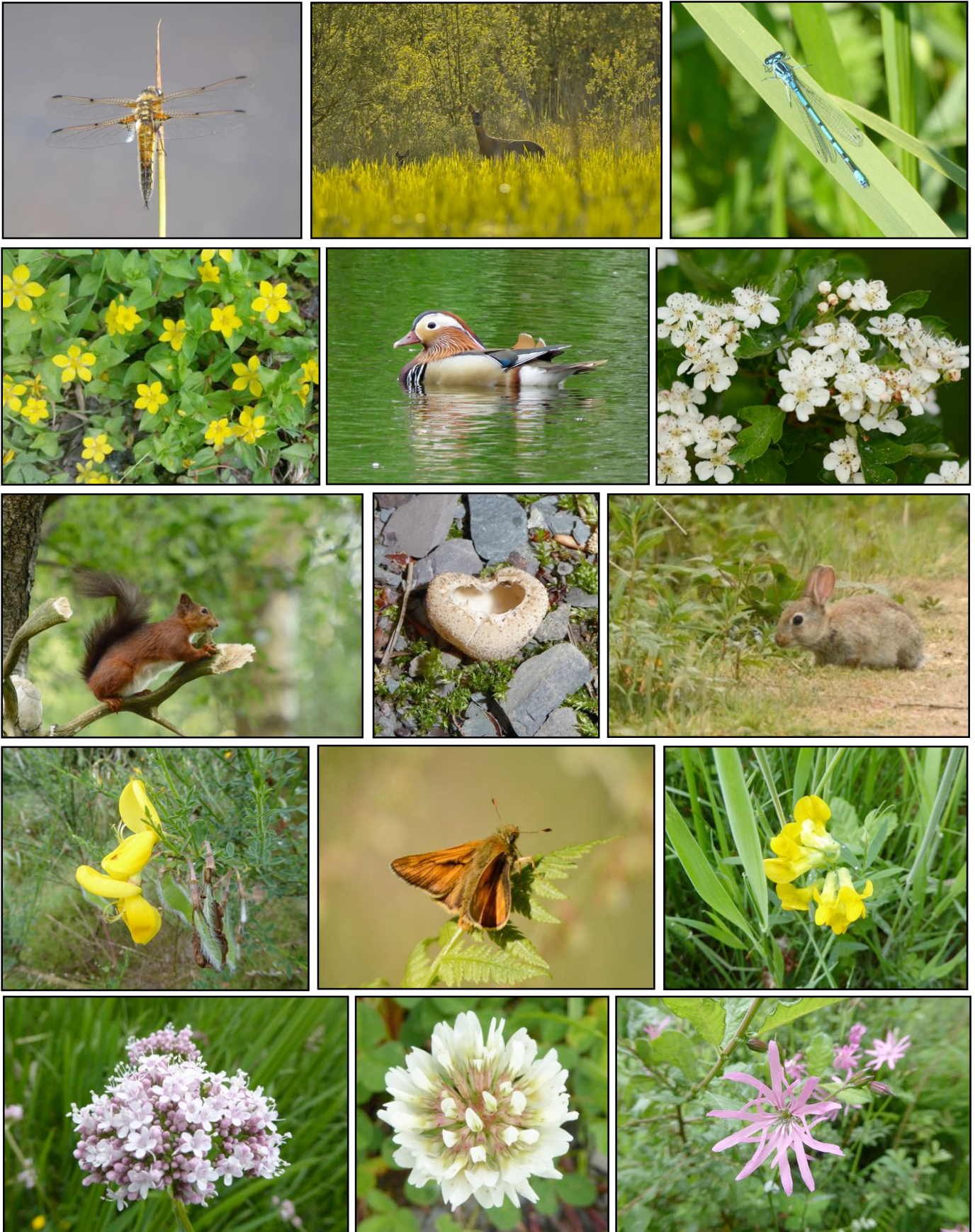
Common Lizard, Frog, Newt, Toad.

d. Invertebrates

Black Slug; Buff-tailed, Tree and White-tailed Bumble Bees; Common Carder Bee; Green-veined White, Large Skipper, Large White, Meadow Brown, Orange-tip and Ringlet Butterflies; Crane-flies; Azure, Blue-tailed and Common Blue Damselflies; Four-spotted Chaser Dragonflies; Hoverflies; Eyed Ladybird; Midges; Mosquitoes; Chimney Sweeper, Clouded-bordered Brindle, Common White Wave, Flame Carpet, Grass, Large Yellow Underwing and Nettle-tap Moths.



3. June Photo-gallery.



Row 1: Four-spotted Chaser (JR), Roe Deer and Fawn (EC), Azure Damselfly (JR)

Row 2: Yellow Pimpernel (JR), Mandarin Duck (DA), Hawthorn Blossom (JR)

Row 3: Red Squirrel gnawing antler (JR), Cellar Cup (JR), Young Rabbit (JR)

Row 4: Broom (JR), Large Skipper (JR), Meadow Vetchling (JR)

Row 5: Common Valerian (JR), White Clover (JR), Ragged Robin (JR)

Photographs: David Alan (DA), Ed Cameron (EC), Jim Rae (JR)

4. Planned Activities

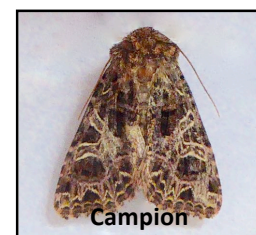
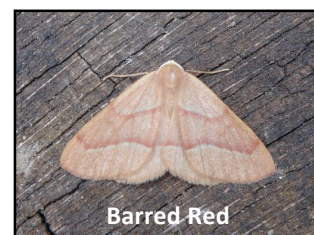
18th - June Moths with Jim Rae

Conifer
Woodland
NY 124 803

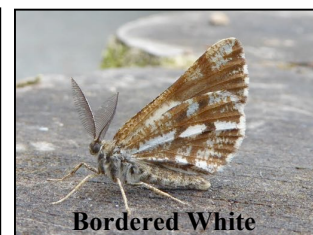
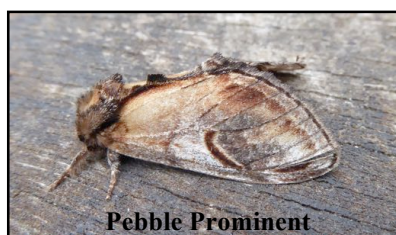
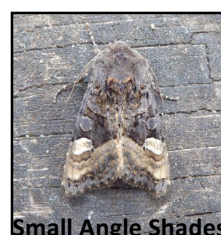
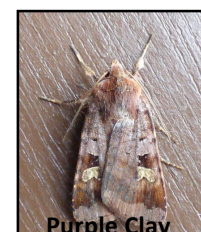
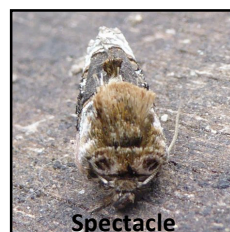
Pond
Fringe
NY 125 803

Macro-moths

1962	Barred Red	<i>Hylaea fasciaria</i>	1	-
1758	Barred Straw	<i>Eulithis pyraliata</i>	1	-
1954	Bordered White	<i>Bupalus piniaria</i> - northern - f	1	-
1906	Brimstone Moth	<i>Opisthoptis luteolata</i>	1	-
2061	Buff Ermine	<i>Spilosoma luteum</i>	4	-
2166	Campion	<i>Hadena rivularis</i>	-	1
1887	Clouded Border	<i>Lomaspilis marginata</i>	8	30
1956	Common Wave	<i>Cabera exanthemata</i>	1	1
1955	Common White Wave	<i>Cabera pusaria</i>	-	1
2008	Coxcomb Prominent	<i>Ptilodon capucina</i>	5	1
2330	Dusky Brocade	<i>Apamea remissa</i>	-	2
1722	Flame Carpet	<i>Xanthorhoe designa</i>	-	1
2102	Flame Shoulder	<i>Ochropleura plecta</i>	-	1
14	Ghost Moth	<i>Hepialus humuli humuli</i> - f	-	1
1961	Light Emerald	<i>Campaea margaritata</i>	-	2
18	Map-winged Swift	<i>Hepialus fusconebulosa</i> - m & f	4	1
1756	Northern Spinach	<i>Eulithis populata</i>	1	-
2425	Nut-tree Tussock	<i>Colocasia coryli</i>	-	1
2011	Pale Prominent	<i>Pterostoma palpina</i>	-	1
2003	Pebble Prominent	<i>Notodonta ziczac</i>	-	1
1981	Poplar Hawkmoth	<i>Laothoe populi</i>	2	4
2122	Purple Clay	<i>Diarsia brunnea</i>	-	1
1727	Silver-ground Carpet	<i>Xanthorhoe montanata montanata</i>	2	1
2305	Small Fan-foot	<i>Herminia grisealis</i>	1	-
2198	Smoky Wainscot	<i>Mythimna impura</i>	-	1
2450	Spectacle	<i>Abrostola tripartita</i>	-	1
1769	Spruce Carpet	<i>Thera britannica</i>	1	-
2134	Square-spot Rustic	<i>Xestia xanthographa</i>	-	1
2118	True Lover's Knot	<i>Lycophotia porphyrea</i>	-	1
2060	White Ermine	<i>Spilosoma lubricipeda</i>	4	4



New species for Eskrigg Reserve



Photographs: Jim Rae

Mon. 20th / Tue. 21st - Lochmaben Nursery Groups 1 & 2 visited the Reserve.



Thu. 23rd - Hoddum Nursery visited the Reserve.

All three Nursery groups took part in a Gruffalo Hunt, pond dipping, a leaf matching challenge, a June flower search and had an enjoyable picnic in the sunshine. While wandering through the Reserve they also spotted a wide variety of animals including Red Squirrels, birds, lizards, frogs, toads, butterflies, moths, grasshoppers and other invertebrates.



Some of the children from Hoddum made a cone sculpture of a hedgehog.

Fri. 24th - Lockerbie Cubs visited the Reserve.



The Cubs spent an hour investigating the beasts that inhabit the woodland floor and a nearby log pile.

The organisms identified included:

frogs, toads, newt, Large Yellow Underwing, springtails, rove beetles, burying beetles, crane fly larvae, mosquitoes, gnats, spiders, centipedes, millipedes, spiders, harvestmen, woodlice, slugs and worms.

They also spotted several different species of fungi.

5. New Visitor - A Black East Indian Duck



This is an ornamental breed of domestic bantam duck often bred for show. Despite its exotic sounding name, it is thought to have originated in America during the 19th century. The ducks have jet-black bills and legs, dark brown eyes and a beetle-green iridescent sheen to their plumage that can only be seen at certain angles as the light reflects off it. Early in the season the eggs are black or dark grey; later in the laying season they gradually change to light grey or blue. When showing, the aim is for a solid colour and there should be no white feathers in sight. Older females, like this one, often develop some white feathers.

Photographs: Jim Rae

6. Volunteer Activities

6th / 7th June - SGN Volunteers assist at Eskrigg Reserve and Woodland Walks

Volunteers from the Dumfries sub-depot of Scotland Gas Networks plc, as part of their Community Action Programme, helped transform two sections of the woodland walks near Eskrigg Nature Reserve into hard-core paths in order to facilitate disabled access. The work was carried out to support Lockerbie Wildlife Trust (LWT) in its efforts to make the Reserve and Woodland Walks more accessible to people in general and especially those with mobility problems.

On Monday, 6th June, Kenny Morland brought along seven of his work colleagues and a range of equipment (two diggers, a mini-dumper, wheel barrows, rakes and shovels) for the day and constructed an eighty metre section of hard-core path through the middle of the wood next to the mountain bike trail.



L to R - Kenny Morland, Graham Finlay, Andy Telfer, Gavin Jones, Cameron Boan, Roddy Pool and Pat Bell.
Not in the picture was Willie Warren who was present for the morning only.

On Tuesday, 7th June, Kenny Galloway and his team used the same equipment to create a sixty-five metre section of path alongside a rough and wet section of forest road as well as putting in two drainage pipes.



L to R - Jim Slaven, Andy Telfer, Douglas McCormack, John Casey, Kenny Galloway and Cameron Walker.
Not in the picture was Willie Warren, who was also present for the second morning.

SGN supplied 40 tonnes of type 1 sub-base and LWT supplied the Terram membrane, 15 tonnes of 25mm gravel topping, the two drainage pipes and a quad bike and trailer to help transport the gravel.

Lockerbie Wildlife Trust would like to thank the volunteers from SGN for a job well done. The paths will be used and appreciated by countless visitors in the years to come.

Photographs: Jim Rae

Fri. 4th / Sat 5th - Jim Rae spent the weekend widening fifty metres of woodland path before laying Terram membrane, barrowing in the type 1 sub-base, then raking and rolling the gravel.



Thu. 9th until Tue. 14th - Bob Glaister and Sybille Spägele very kindly looked after the Reserve, cleaned the Centre and filled the bird and squirrel feeders while Jim was away.

Sat. 18th - Members of the E-team, Maya Saunders, Patrick Malone and Michael Kerr, worked another part of the woodland paths. They cleared the path, laid Terram membrane, brought in type 1 sub-base, then raked it and rolled it.



Maya raking the gravel



Patrick and Michael filling the trailer.

Sun. 26th - Maintenance Day

David Hughes and Sybille Spägele helped Jim strim and rake the sides of the Reserve path, the picnic area and the entrance and path opposite the Dryfesdale Lodge Visitors' Centre.



Tue. 28th & Thu. 30th - John Wilson spent the two days helping Jim to prepare and lay the concrete ramp into the Compost Toilet and putting the final gravel topping on the sections of woodland paths mentioned above.



Photographs: Jim Rae

For more information call Jim Rae or visit our website.

Jim Rae (Eskrigg Reserve Manager)
Address: Carradale, 12 Douglas Terrace, Lockerbie, Dumfries and Galloway, DG11 2DZ.
Home Tel.: 01576 203 314 / Mobile No.: 07739 987 009
Email: jim.rae2012@gmail.com