

# Lockerbie Wildlife Trust

(www.lockerbie-wildlife-trust.co.uk)



## Eskrigg Reserve

### January 2016 News Bulletin

Scottish Charity No:  
SC 005538

#### 1. Views of the Reserve taken on the 16<sup>th</sup> and 26<sup>th</sup> of January.



#### 2. Confirmed wildlife sightings at the Reserve in January.

##### a. Birds

Blackbird, Black-headed Gull, Blue Tit, Brambling, Buzzard, Carrion Crow, Chaffinch, Coal Tit, Cormorant, Dunnock, Fieldfare, Goldcrest, Goosander, Great Spotted Woodpecker, Great Tit, Grey Heron, Jay, Kestrel, Kingfisher, Long-tailed Tit, Mallard, Moorhen, Mute Swan, Nuthatch, Pheasant, Raven, Robin, Siskin, Song Thrush, Sparrowhawk, Starling, Treecreeper, Willow Tit, Wood Pigeon, Wren.



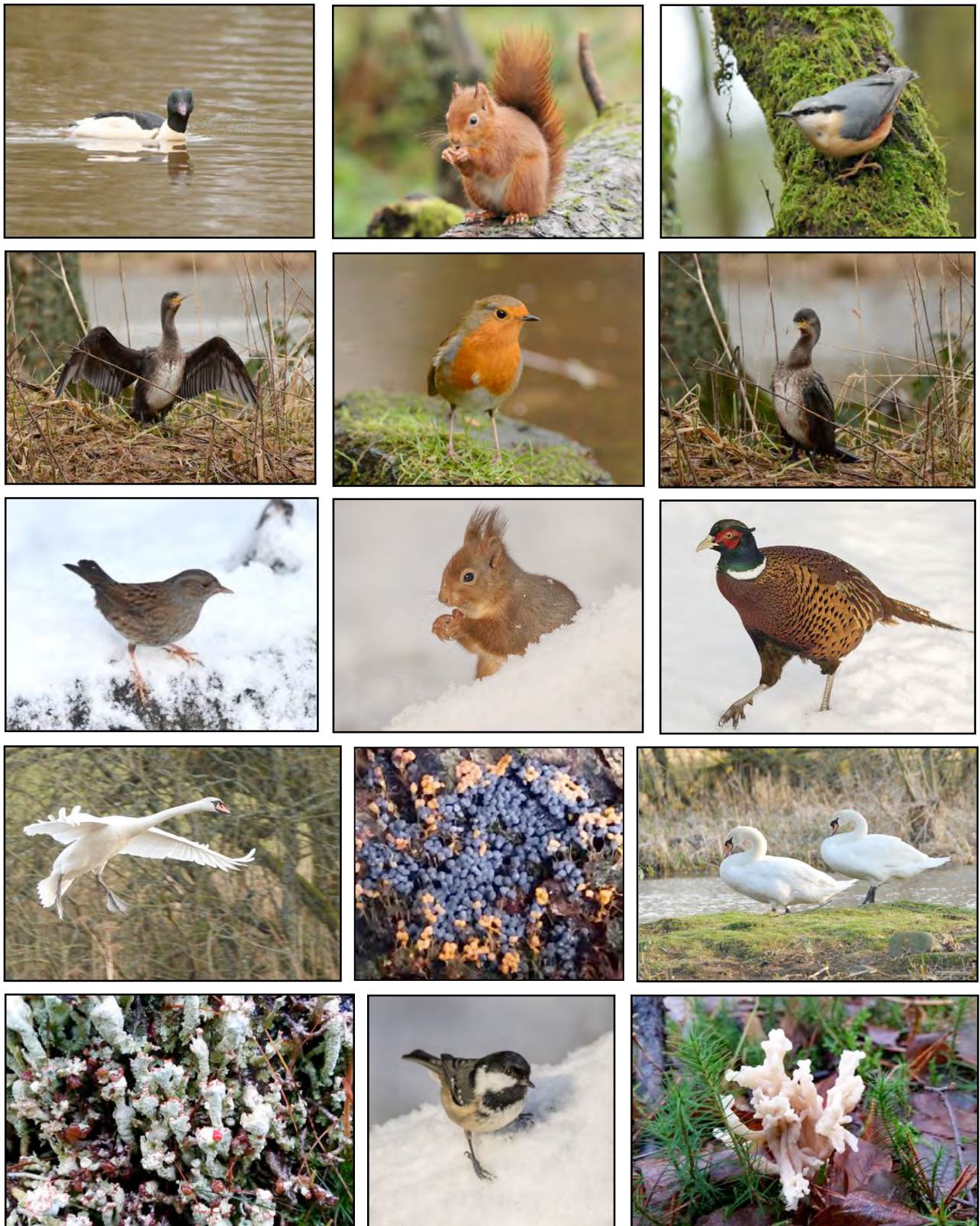
##### b. Mammals

Badger, Bank Vole, Fox, Mole, Otter, Rabbit, Red Squirrel, Roe Deer, Stoat, Wood Mouse.



Photographs - Bob Little (BL), Jim Rae (JR).

### 3. January Photo-gallery.



Row 1: Goosander (JR), Red Squirrel (JR), Nuthatch (JR).

Row 2: Cormorant (JR), Robin (JR), Cormorant (JR).

Row 3: Dunnock (JR), Red Squirrel (BL), Pheasant (BL).

Row 4: Mute Swan coming into land (JR), Slime Mould Sporangia (JR), Pair of Mute Swans (JR).

Row: Cladonia sp. (JR), Coal Tit (JR), Wrinkled Club (JR).

**Photographs - Bob Little (BL), Jim Rae (JR)**

4. **Migrating slime mould.**



This yellow/orange slime mould was recorded by Kirsty Liddon as the amoeboid cells moved up the side of the table outside the Eskrigg Centre over several days. It eventually gathered on the upper and lower surfaces of two Turkeytail fungi to form two distinct plasmodia. Many thanks to Kirsty for looking after the Reserve between the 4<sup>th</sup> and 7<sup>th</sup> of January.

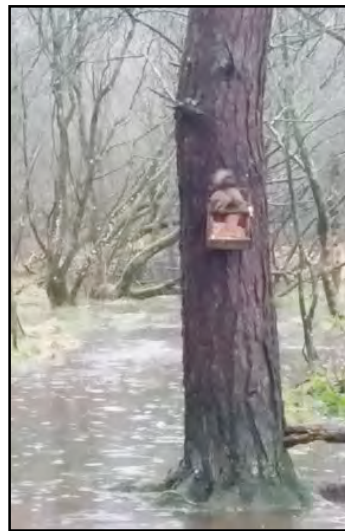
Photographs - Kirsty Liddon



5. **The 10<sup>th</sup> and 26<sup>th</sup> of January - heavy rain and flooding.**



At the Red Squirrel Hide



Squirrels feeding in the rain



At the Eskrigg Centre

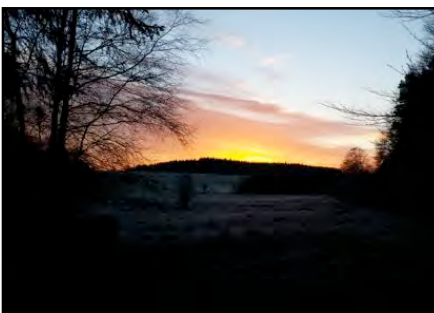


Overflowing the sluice dyke



At the granite seat

6. **The 16<sup>th</sup> of January - a day of contrasts.**



before



during



after

7. **Hair Ice**

In January 2015, I reported on how fungi and bacteria in rotting wood contribute to the growth of **hair ice**. Recent research (by Christian Matzler, University of Bern, July 2015) suggests that a specific fungus, *Exidiopsis effusa*, is involved. On a humid night, with a temperature of just below 0°C, the fungus promotes the formation of very thin hairs of ice with a diameter of about 0.01mm. The ice melts to the touch.



Photographs - Jim Rae

## 8. Volunteer Activities



**Thu. 14<sup>th</sup>** - **Connor Jardine** brashed some of the Norway Spruce and Lodgepole Pine beside the path in from the forest road while **Jim** cleared the drainage pipes running under the path and cleared the ditches downstream to allow the water to drain away.

**Sat. 16<sup>th</sup>** - **The Duke of Edinburgh Volunteers (Maya Saunders, Rory Monford, Rory Holden, Patrick Malone, Keir Stewart and Michael Kerr)** cleared the first half of the ditch that runs alongside the Reserve path and brashed some more of the conifers.

**Thu 21<sup>st</sup>** - **Connor Jardine** helped clean out the bird boxes at Annan Distillery, helped locate the squirrel feeders at Torwood and then used the quad-bike and trailer to top up the gravel on the path near the car park.

**Sat. 23<sup>rd</sup>** - **The Duke of Edinburgh Volunteers (Maya Saunders, Rory Holden, Keir Stewart and Michael Kerr)** completed the ditch clearance and erected a sleeper-bridge for use when the toilet is being installed.



(L to R - P1 Michael Kerr, Rory Holden, Keir Stewart, Patrick Malone, Rory Monford - P2 Mrs Saunders, Maya Saunders, Mr Saunders - P3 Cleared ditch and sleeper bridge)

## 9. Stolen Picnic Bench



On returning from Edinburgh on the 7<sup>th</sup> of January, I noticed that one of the benches had disappeared from the picnic area. After a thorough search, I realised that it had been stolen. I reported the theft to the Police and on Facebook. Within a few days, a generous benefactor, who wishes to remain anonymous, had paid for a replacement.

I collected a kit for a six foot bench from Creca Sawmill on the 14<sup>th</sup> and used a pyrograph

to burn the words ESKRIGG RESERVE on to the bench top in the hope that doing so would discourage any thieves in future.

On the 15<sup>th</sup>, I assembled the bench and, with the help of my neighbour David Horsburgh, installed the new bench at the Reserve. The second half of January has been so wet that there hasn't been an opportunity for visitors to make use of the new furniture, but I am sure it will see a lot of use in the warmer weather.



Photographs - Jim Rae

For more information call Jim Rae or visit our website.

**Jim Rae (Eskrigg Reserve Manager)**  
**Address: Carradale, 12 Douglas Terrace, Lockerbie, Dumfries and Galloway, DG11 2DZ.**  
**Home Tel.: 01576 203 314 / Mobile No.: 07739 987 009**  
**Email: jim.rae2012@gmail.com**