

# Lockerbie Wildlife Trust

(www.lockerbie-wildlife-trust.co.uk)

## Eskrigg Reserve

### July 2021 News Bulletin



Scottish Charity No:  
SC 005538

1. Very low water in the pond on the 28th of June. Ducklings and Swan coping well.



JR

2. Confirmed wildlife sightings at the Reserve during June.

**a. Birds**

Blackbird, Black-headed Gull, Blue Tit, Bullfinch, Buzzard, Carrion Crow, Chaffinch, Chiffchaff, Coal Tit, Collared Dove, Dunnock, Goldfinch, Great Spotted Woodpecker, Great Tit, Greenfinch, Grey Heron, House Sparrow, Jay, Lesser Redpoll, Long-tailed Tit, Magpie, Mallard, Mute Swan, Nuthatch, Oystercatcher, Pheasant, Robin, Siskin, Song Thrush, Sparrowhawk, Starling, Stock Dove, Swallow, Tree Creeper, Tree Sparrow, Woodpigeon, Wood Warbler, Wren.

**b. Mammals**

Bank Vole, Common Shrew, Fox, Hare, Rabbit, Red Squirrel, Roe Deer.

**c. Insects**

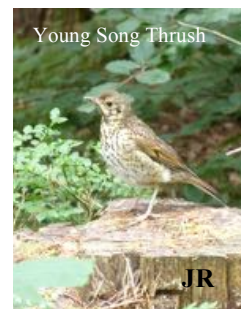
**Butterflies:** Green-veined White, Large White, Meadow Brown, Red Admiral, Ringlet, Small Copper, Small Skipper, Small Tortoiseshell, Speckled Wood.

**Moths:** Cinnabar caterpillars, Light Emerald, Straw Dot.

**Other insects:** **Dark Fungus Gnat (*Sciara hemerobioides*) - New species,** Grasshopper, Soldier Beetle.

**d. Fungi**

Beech Woodwart, Blackening Brittle Gill, Blusher, Dryad's Saddle, Nutty Brittle Gill, Tawny Grisette.



Young Song Thrush

JR

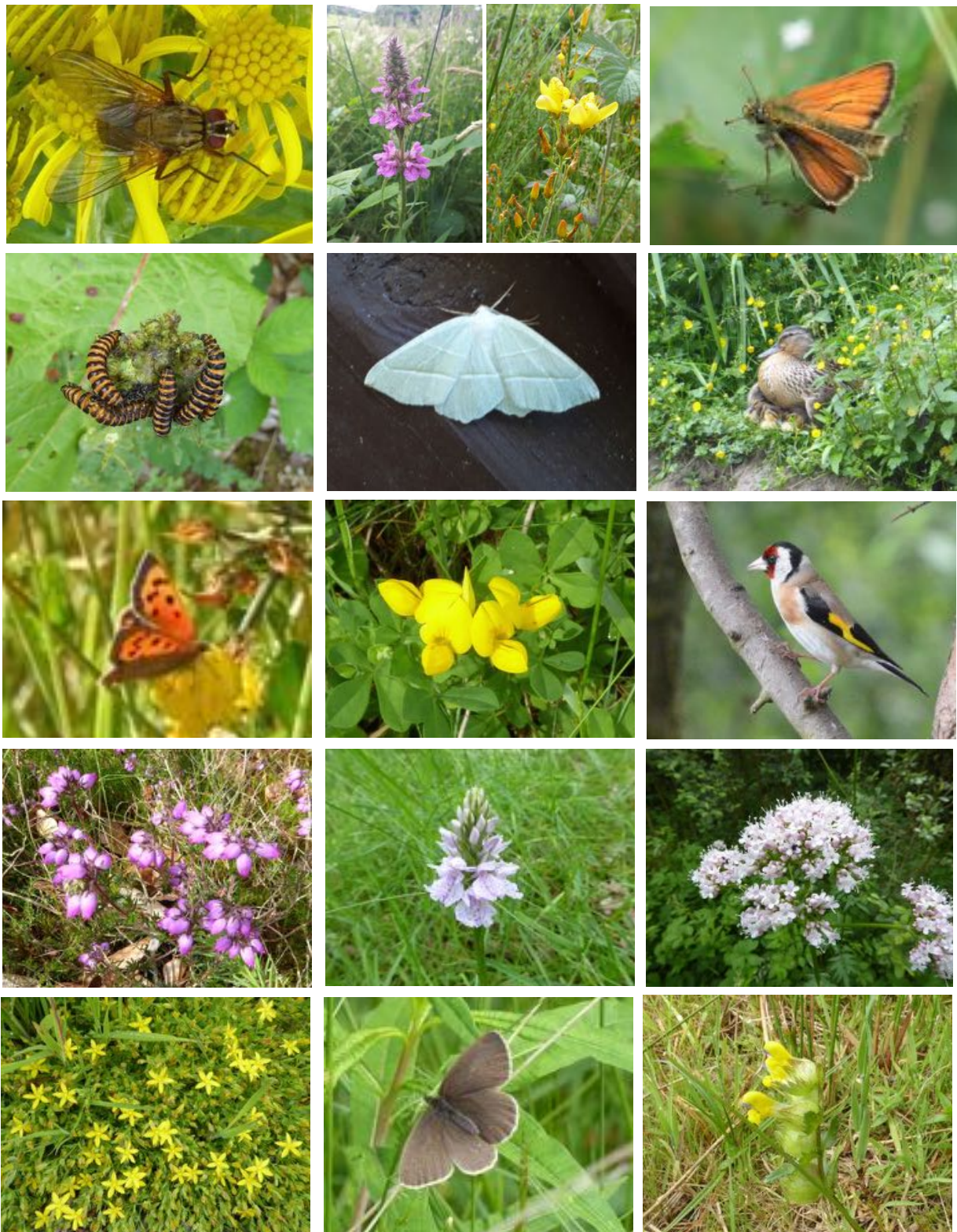


Dark Fungus Gnat

BT

Photographs by Brian Taylor (BT) and Jim Rae (JR)

### 3. Eskrigg Reserve - July 2021 Photo-gallery



1st Row : Brown Fly (*Haematobosca stimulans*), Marsh Woundwort, Slender St. John's-wort, Small Skipper

2nd Row : Cinnabar caterpillars, Light Emerald, Female Mallard with ducklings.

3rd Row : Small Copper, Bird's-foot Trefoil, Goldfinch

4th Row : Bell Heather (*Erica cinerea*), Spotted Heath Orchid, Marsh Valerian

5th Row : Trailing St. John's-wort, Ringlet, Yellow Bartsia

Photographs by Jim Rae

#### 4. July Activities at Eskrigg Reserve

17th **Jim** did a **Moth Trapping**, see page 4.

28th Some members of the **Annandale Red Squirrel Group** met up at the Eskrigg Centre to discuss Squirrel Survey Techniques.

#### 5. Maintenance work at the Reserve and Woodland Walks in July

2nd **Jim Rae** and **Graeme Urquhart** pulled some of the self-seeded birch trees in the heathland area, cleared self-seeded trees and whins from the ditch round the Bog Myrtle Walk, cleared the soil from the site at the T-junction of the forest road where a new bench will be placed and laid a bed of clean gravel.

5th **Jim** and **Graeme** spent the day removing more self-seeded trees and whins from along the Bog Myrtle Walk.

7th **Jim** strimmed and raked the path from the Reserve Car Park down to the Dog Bin.

8th **Jim** strimmed the path to the duck feeder and the path to the Kingfisher Hide.

9th In the morning, **Norah Muirhead** and **Anne Legg** weeded the area round the Centre while **Graeme** raked up the cuttings from the path to the duck feeder and **Jim** raked the path to the Kingfisher Hide. **Graeme** and **Jim** also weeded and cleared the area around the toilet. In the afternoon, **Graeme** and **Jim** cleared more self-seed trees and whins from along the Bog Myrtle Walk.

12th **Graeme** and **Jim** strimmed and raked the path from the Dog Bin to the shelter and strimmed the picnic area.

13th **Jim** strimmed and raked the path through the Reserve.

16th **Graeme** and **Jim** dismantled part of the original jetty, the timbers had rotted over the past thirty years and need replaced. **Norah** kindly did some more weeding of the Reserve path.

17th The **Mute Swan "S"** returned from the Barony Wildlife Hospital. Thanks to **Lorna Kempzell** (in charge at the hospital) for looking after "S" so well and aiding her recovery. Thanks also to **Janet Proudlock** (SSPCA) for transporting "S" to and from the hospital.

19th **Graeme** and **Jim** dismantled the rest of the original jetty. **Zack Nicholson** and **Jack Prentice** did a couple of hours of pruning of brambles along the forest road.



22nd **Jim** and **Neil Robertson** installed a new bench seat near the T-junction on the forest road. **Jim** then spent the rest of the day pruning trees and brambles along the Southern Loop.

23rd **Norah**, **Graeme** and **Jim** strimmed and raked the edges of the Forest Road, between the storage shed and the gravel heaps.



24th **Jim** strimmed the sides of the feeder burn and around the Red Squirrel Hide.

25th **Jim** strimmed the edges of the path from the Forest Road to the Pipeline Walk. Meanwhile **Zack** started work on the path west of the Pipeline Walk, to be known as **Zack and Jack's Track**.



26th **Zack**, **Jack** and **Graeme** spent the day working on Zack and Jack's Track, while **Jim** caught up on some paperwork.

27th - 28th **Zack** and **Jack** worked on their track at various times.

29th - 31st **Zack** kindly opened up and closed up, while **Jim** was on sick leave.

Photographs by **Jim Rae**

## Moth Trapping - 17/18.07.21 - Eskrigg Reserve

## Macro-moths

Common Name	Scientific Name	
Antler Moth	<i>Cerapteryx graminis</i>	4
Barred Red	<i>Hylaea fasciaria</i>	1
Barred Straw	<i>Eulithis pyraliata</i>	19
Beautiful Carpet	<i>Mesoleuca albicillata</i>	1
Beautiful Golden Y	<i>Autographa pulchrina</i>	1
Beautiful Snout	<i>Hypena crassalis</i>	2
Bee Moth (f+m)	<i>Aphomia sociella</i>	2
<b>Blue-bordered Carpet</b>	<b><i>Plemyria rubiginata</i></b>	3
Brick	<i>Agrochola circellaris</i>	1
Buff-tip	<i>Phalera bucephala</i>	2
Burnished Brass	<i>Diachrisia chrysitis</i>	10
Clouded Border	<i>Lomaspiis marginata</i>	23
Clouded Magpie	<i>Abraxas sylvata</i>	1
Common Carpet	<i>Epirrhoe alternata</i>	1
<b>Common Emerald</b>	<b><i>Hemithea aestivaria</i></b>	1
Common Footman	<i>Eilema lurideola</i>	2
Common Lutestring	<i>Ochropacha duplaris</i>	1
Common Rustic	<i>Mesapamea secalis</i>	9
Common Wainscot	<i>Mythimna pallens</i>	13
Common Wave	<i>Cabera exanthemata</i>	4
Common White Wave	<i>Cabera pusaria</i>	5
Coxcomb Prominent	<i>Ptilodon capucina</i>	5
Crescent	<i>Celaena leucostigma</i>	1
Dark Arches	<i>Apamea monoglypha</i>	2
Dark-barred Twin-spot Carpet	<i>Xanthorhoe ferrugata</i>	1
Dark Marbled Carpet	<i>Chlorochysta citrata</i>	1
Dotted Carpet	<i>Alcis jubata</i>	2
Dotted Clay	<i>Xestia baja</i>	7
Double Lobed	<i>Apamea ophiogramma</i>	7
Drinker	<i>Euthrix potatoria</i>	7
Dwarf Cream Wave	<i>Idaea fuscovenosa</i>	2
Early Thorn	<i>Selenia dentaria</i>	2
Elephant Hawkmoth	<i>Deilephila elpenor</i>	4
Engrailed	<i>Ectropis bistortata</i>	14
Flame Carpet	<i>Xanthorhoe designata</i>	2
Garden Tiger	<i>Arctia caja</i>	2
Gold Spot	<i>Plusia festucae</i>	3
Gothic	<i>Naenia typica</i>	3
Grey Arches	<i>Polia nebulosa</i>	1
Green Carpet	<i>Colostysia pectinataria</i>	17
Heart and Dart	<i>Agrostis exclamatonis</i>	2

## Macro-moths (continued)

Common Name	Scientific Name	
Ingrailed Clay	<i>Diarsia mendica</i>	12
July Highflyer	<i>Hydriomena furcata</i>	26
Large Emerald	<i>Geometra papilionaria</i>	8
Large Yellow Underwing	<i>Noctua pronuba</i>	9
Lempke's Gold Spot	<i>Plusia putnami gracilis</i>	1
Lesser Yellow Underwing	<i>Noctua comes</i>	3
Light Emerald	<i>Campaea margaritata</i>	11
Marbled Minor	<i>Oligia strigilis</i>	7
Mottled Beauty	<i>Alcis repandata</i>	2
Muslin Footman	<i>Nudaria mundana</i>	3
Northern Spinach	<i>Eulithis populata</i>	1
Peach Blossom	<i>Thyatira batis</i>	3
Plain Golden Y	<i>Autographa jota</i>	1
Poplar Hawkmoth	<i>Laothoe populi</i>	3
Purple Clay	<i>Diarsia brunnea</i>	1
Riband Wave	<i>Idaea aversata</i>	12
Rivulet	<i>Perizoma affinitata</i>	1
Silver Ground Carpet	<i>Xanthorhoe montanata</i>	7
Silver Y	<i>Autographa gamma</i>	2
Single-dotted Wave	<i>Idaea dimidiata</i>	1
Small Angle Shades	<i>Euplexia lucipara</i>	1
Small Engrailed	<i>Ectropis crespuscularia</i>	3
Small Fan-foot	<i>Herminia grisealis</i>	3
Small Rivulet	<i>Perizoma alchemillata</i>	5
Small Square-spot	<i>Diarsia rubi</i>	2
Small Wainscot	<i>Chortodes pygmina</i>	1
Small Yellow Wave	<i>Hydrelia flameolaria</i>	2
Snout	<i>Hypena proboscidalis</i>	4
Spectacle	<i>Abrostola tripartita</i>	1
Square Spot	<i>Paradarisa consonaria</i>	2
Straw Dot	<i>Rivula sericealis</i>	8
Welsh Wave	<i>Venusia cambrica</i>	4

## Micro-moths

Barred Fruit-tree Tortrix	<i>Pandemis cerasana</i>
Beautiful China-mark	<i>Nymphula nitidulata</i>
Mother of Pearl	<i>Pleuroptya ruralis</i>
No common name	<i>Evergestis pallidata</i>
No common name	<i>Udea olivalis</i>

+ many others (no time to identify and count)

Total of 78 species caught in the moth traps and two others in the field, four new species for Eskrigg Reserve.



Blue-bordered Carpet

Narrow-bordered Five-spot Burnet  
(*Zygaena ioniceae* ssp. *latomarginata*)Yarrow Plume  
(*Gillmeria pallidactyla*)

Common Emerald

Photographs by Jim Rae

## 7. Some of the plants that were flowering at the Reserve in July

Bell Heather, Bird's-foot Trefoil, Branched Bur-reed, Brooklime, Broom, Bugle, Common Nettle, Creeping Buttercup, Cut-leaved Cranesbill, Cross-leaved Heath, Daisy, Dandelion, Elder, Forget-me-not, Foxglove, Germander Speedwell, Hawkweed, Heath Bedstraw, Heath Milkwort, Heath Speedwell, Heath Spotted-orchid, Honeysuckle, Lesser Stitchwort, Marsh Cinquefoil, Marsh Speedwell, Marsh Thistle, Marsh Valerian, Marsh Woundwort, Meadow Buttercup, Meadow Cranesbill, Meadowsweet, Meadow Vetchling, Nippleweed, Oxeye Daisy, Pignut, Pink Purslane, Prickly Sow-thistle, Ragged Robin, Ragwort, Red Campion, Red Clover, Selfheal, Slender St. John's-wort, Tormentil, Trailing St. John's-wort, Tufted Vetch, Tutsan, Water Forget-me-not, White Campion, White Clover, Wood Avens, Yarrow, Yellow Bartsia, Yellow Pimpernel.



With reference to the list at the top of the page, can you identify the nine plants in flower in the above pictures?

This month only one of the flowers in the quiz is missing from in the list.

### Answers to the June Quiz:

- Row 1: Hawkweed, Brooklime, Yellow Pimpernel
- Row 2: Marsh Valerian, Wood Avens, Ragged Robin
- Row 3: Welsh Poppy, Hawthorn, [Herb Robert](#)
- Row 4: [Spear Thistle](#), [Star of Bethlehem](#), Foxglove

Please note that the list of plants in flower in the June Bulletin only mentioned **some** of the plants in flower during the month in question.

The June quiz included [three flowers](#) that were not included in the list. Congratulations to **Karen Miller** for naming all twelve flowers correctly.

Photographs by Jim Rae

**Jim Rae (Eskrigg Reserve Manager)**  
**Address: Carradale, 12 Douglas Terrace, Lockerbie, Dumfries and Galloway, DG11 2DZ.**  
**Home Tel.: 01576 203 314 / Mobile No.: 07739 987 009**  
**Email: [jim.rae2012@gmail.com](mailto:jim.rae2012@gmail.com)**