

Lockerbie Wildlife Trust

(www.lockerbie-wildlife-trust.co.uk)



Scottish Charity No:
SC 005538

Eskrigg Reserve

November 2016 News Bulletin

1. View of the pond on the 8th - Field Maple leaves on the ice - by Jim Rae.



2. Confirmed wildlife sightings at the Reserve in November.

- a. Birds



Mute Swan



Cock Pheasant



Nuthatch

Blackbird, Black East Indian Duck, Black-headed Gull, Blue Tit, Bullfinch, Buzzard, Carrion Crow, Chaffinch, Coal Tit, Common Gull, Dunnock, Goldcrest, Great Spotted Woodpecker, Great Tit, Grey Heron, House Sparrow, Jackdaw, Jay, Kingfisher, Little Grebe, Long-tailed Tit, Mallard, Moorhen, Mute Swan, Nuthatch, Pheasant, Raven, Robin, Rook, Siskin, Song Thrush, Sparrowhawk, Starling, Treecreeper, Waxwing, Wood Pigeon, Wren.

- b. Mammals

Mole, Rabbit, Red Squirrel, Woodmouse.

- c. Reptiles and Amphibians

Frog,

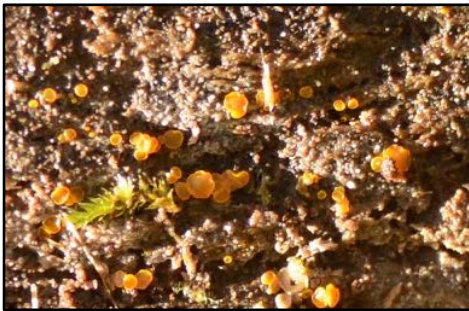


Red Squirrel

Photographs by Jim Rae

3. November Fungi - Newly identified species at Eskrigg

Common Name	Scientific Name	Common Name	Scientific Name
Amethyst Deceiver	<i>Laccaria amethystea</i>	Horsehair Parachute	<i>Gymnopus androsaceus</i>
Bay Polypore	<i>Polyporus durus</i>	Jelly Ear	<i>Auricularia auricula-judae</i>
Birch Polypore	<i>Piptoporus betulinus</i>	Jelly Tooth	<i>Pseudohydnum gelatinosum</i>
Bleeding Broadleaf Crust	<i>Stereum rugosum</i>	Leafy Brain	<i>Tremella foliacea</i>
Brown Puffball	<i>Bovista nigrescens</i>	Nutty Brittlepill	<i>Russula integra</i>
Candlesnuff Fungus	<i>Xylaria hypoxylon</i>	Ochre Brittlepill	<i>Russula ochroleuca</i>
Clouded Funnel	<i>Clitocybe nebularis</i>	Primrose Brittlepill	<i>Russula sardonica</i>
Common Earthball	<i>Scleroderma citrinum</i>	Purple Brittlepill	<i>Russula atropurpurea</i>
Common Puffball	<i>Lycoperdon perlatum</i>	Purple Jellydisc	<i>Ascocoryne sarcoides</i>
Coral Spot	<i>Nectria cinnabarina</i>	Shaggy Scalycap	<i>Pholiota squarrosa</i>
Crested Coral	<i>Clavulina coralloides</i>	Sickener	<i>Russula emetica</i>
Dark Honey Fungus	<i>Armillaria ostoyae</i>	Silverleaf Fungus	<i>Chondrostereum purpureum</i>
Dyer's Mazegill	<i>Phaeolus schweinitzii</i>	Sulphur Tuft	<i>Hypholoma fasciculare</i>
Green Elfcup	<i>Chlorociboria aeruginascens</i>	Turkeytail	<i>Trametes versicolor</i>
Grisette	<i>Amanita vaginata</i>	Willow Bracket	<i>Phellinus igniarius</i>
Herald of Winter	<i>Hygrophorus hypothejus</i>	Wood Hedgehog	<i>Hydnum repandum</i>
Holly Speckle	<i>Trochila ilicina</i>	Lemon Disco	<i>Bisporella citrina</i>



Lemon Disco



Green Elfcup



Leafy Brain



Dark Honey Fungus



Silverleaf

(Unidentified fungus from last month)



Holly Speckle

Coral Spot (*Nectria cinnabarina*):



This is a very common member of the Ascomycota. Its life cycle has in two distinct stages that produce independent fruit bodies.

Asexual (conidial) stage: These are the soft coral-pink, cushion-like pustules from which the fungus gets its name. They produce asexual spores.

Sexual stage: A dense cluster of brownish-red, egg-like spheres, each with a nipple-like projection at the top. They produce sexual spores.

The fungus is found on dead and dying wood of deciduous trees - in particular beech, rarely on conifers.

Pictures by Jim Rae

4. Planned Activities

Wed. 2nd Jim Rae attended an Introduction to Wildlife Recording event in Moffat, run by Mark Pollitt of the Dumfries and Galloway Environmental Resources Centre.

Sun. 6th Lantern Parade

Three families came along to take part in the Lantern Parade. It was a cold but dry evening with a clear, starry sky, right up till the end when there was a light flurry of snow.

Tue. 15th Visit by the U3A

Jim met thirteen members of the group at the Reserve car park and accompanied them down to the Reserve. After a guided tour of the Reserve, he then led the group on a walk through the woods, pointing out features of interest on the way.



5. Volunteer Activities

Tue. 1st and 8th Connor Jardine helped **Jim** lay gravel on the Woodland Walks.

Thu. 10th Neil Laidlaw and **Jim Rae** laid gravel on a new section of Woodland Walk.



Neil Laidlaw at work



Sat. 12th Rory Holden, Maya Saunders, Brodan Gough and **Patrick Malone** helped by raking up leaves from the path through the Reserve.

Sun. 27th Maintenance Day

In the morning **Sybill Spägle** and **Jim Rae** filled up the pot-holes on the Eskrigg Farm Road and raked up the leaves from the path between the car park and the Reserve. In the afternoon, they were joined by **Gary Hall** and raked up leaves along the paths in the Reserve.

Tue. 29th Connor Jardine and **Norah Muirhead** helped **Jim** clear a tree from a woodland path in the morning and rake up leaves from part of the Reserve path and one of the Woodland Walks.



Norah Muirhead and Connor Jardine

Photographs by Jim Rae

For more information call Jim Rae or visit our website.

Jim Rae (Eskrigg Reserve Manager)
Address: Carradale, 12 Douglas Terrace, Lockerbie, Dumfries and Galloway, DG11 2DZ.
Home Tel.: 01576 203 314 / Mobile No.: 07739 987 009
Email: jim.rae2012@gmail.com